

MCC

Dental Cabinet Systems



2021 CATALOG



TAILORED SOLUTIONS FOR YOUR DENTAL PRACTICE

1-800-388-6236 | mccdental.com

TAILORED SOLUTIONS FOR YOUR DENTAL PRACTICE



With over 50 years of experience behind us, we at MCC pride ourselves in being a leading manufacturer of Tailored and Custom Dental Cabinets. Our dedication and longevity are integrated in the quality and design of our Dental Cabinets.

This enables us to help you build a Total Work Environment that works for you and your new, or preexisting practice. We offer a wide range of Tailored and custom cabinet solutions that best suit your practice needs whether it be Ortho, Pediatric, Oral or Endodontist.

We use the highest quality materials available, some imported directly from Italy. We have customers from 25 years ago who still have cabinets they bought at that time. In some ways, it's no different than anything else. Customers who are good at keeping their workspaces clean and dry will have a long life for their furniture. ”

Gianni Lucciani



Circa 1985



2021



HEAD OFFICE:

10721 Keele Street North,
Maple, Ontario L6A 1S5
Customer Service **800.388.6236**
Fax **905.832.0732**
Website **www.mccdental.com**
Email **info@mccdental.com**

CABINET ORDERS

All orders must be placed through an authorized MCC dealer. Minimum retail order is \$60.00. Orders must be submitted with a sketch and floor plan. Orders received will be acknowledged within 72 hours. Please contact our Customer Service Department immediately if your order acknowledgment is not received within this time frame. Order acknowledgments and sketches must be signed by the dealer and returned to MCC within 5 business days. All orders are quoted in retail pricing except for freight, installation/delivery and special color charges, which are quoted at dealer cost. MCC reserves the right to change cabinet designs without notice.

PLACING AN ORDER (email to: orders@mccdental.com)

When placing a cabinet order, the following must appear on your purchase order:

- Model, Part, Sketch and/or Quote Number
- Date Required and/or Install Date
- Order Date
- Shipping Instructions
- Contact Person and Number
- Signature of Purchaser
- Purchase Order Number
- Cabinet, Countertop and Edging Color
- Accessories and/or Options
- Quantity

NON STANDARD COLORS

All non-standard color cabinet and countertop orders will incur an upcharge. Add 2-3 weeks to standard lead times for non-standard color cabinet and/or countertop orders.

CHANGES / MODIFICATIONS

Any major changes and/or modifications made to the original design and/or color of cabinet and/or countertop while in production will incur a 30% recovery fee. This fee recovers work in progress. Changes and/or modifications must be submitted to MCC in writing. Upon review and approval of the changes, the order's shipping and installation dates could shift depending on the degree of changes.

CANCELLATIONS

Orders cancelled within two weeks of the order date will incur a 40% cancellation fee. This fee recovers material cutting, production time and labor costs. Cancellations must be submitted to MCC in writing. Custom color orders may not be cancelled.

DELAYED / RESCHEDULED SHIP DATES

Orders which are requested to be rescheduled will be moved to the next available ship date. Orders which are requested to be rescheduled or have delayed shipping, post production, will incur local storage and handling fees until shipped.

TAILORED SOLUTIONS FOR YOUR DENTAL PRACTICE

| COLLECTION/CATEGORY | MODEL | PAGE |
|--|--|------------------------------|
| ASEPTX Sterilization Centers | AXST10, AXST11, AXST12 | 5-6 |
| Retraction System | RMCR4A, RMCR4D, RMCR6, RMCR61, RMCR8 | 7-8 |
| SIGNATURE COLLECTION | | 9-16 |
| Signature - Rears | CONFIGURATIONS, FEATURES & OPTIONS | 10-13 |
| Signature - Sides | CONFIGURATIONS, FEATURES & OPTIONS | 14-16 |
| Custom Cabinets | | 17-18 |
| TAILORED COLLECTION | | 19-36 |
| Tailored - Rears | CONFIGURATIONS, FEATURES & OPTIONS | 20-28 |
| Tailored - Sides | CONFIGURATIONS, FEATURES & OPTIONS | 29-30 |
| Tailored - Center Islands | CONFIGURATIONS, FEATURES & OPTIONS | 31-32 |
| Tailored - Sterilization Centers | CONFIGURATIONS, FEATURES & OPTIONS | 33 |
| Tailored Plus - Sterilization Centers | CONFIGURATIONS, FEATURES & OPTIONS | 34-36 |
| Ortho Systems | MFO2421, MFO2428C | 37-38 |
| Mobile Carts | PROMOTIONAL SERIES 1000 | 39-41 42-43 |
| Pediatric | PB2000 | 45-46 |
| Sanitizing Station | SANITIZING STATION | 47-48 |
| Accessories - Delivery Systems | MCT500PM, MCT520PM, MCT600PK, VACUUM PACKAGES | 49-51 |
| Accessories - Plumbing | PLUMBING | 52-53 |
| Accessories - Waste | WASTE | 54 |
| Terms and Conditions | | 55-56 |



ASEPTX STERILIZATION CENTER



* Note: This product does not protect users or others from disease-causing bacteria. Always clean this product thoroughly after use.

ASEPTX STERILIZATION CENTER

ASEPTX STERILIZATION CENTER

ASEPTX STANDARD FEATURES

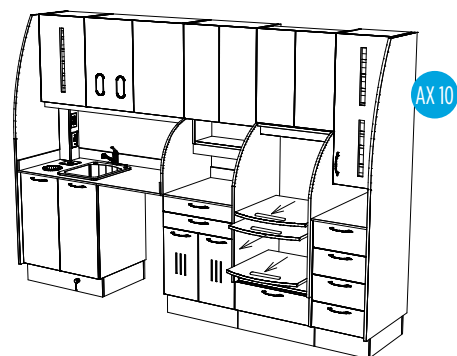
- Standard solid surface countertop
- No seam construction, impervious to water
- 99% Antimicrobial performance
- Stain-Resistant
- Scratch-Resistant
- UV stable
- Under mounted stainless steel sink
- Hardware and plumbing fixtures included
- Foot activated waste drawer
- Soft-close drawers & doors
- HDPE pullout autoclave shelves holds up to 200 lbs.

ASEPTX STERILIZATION CENTER PRICING

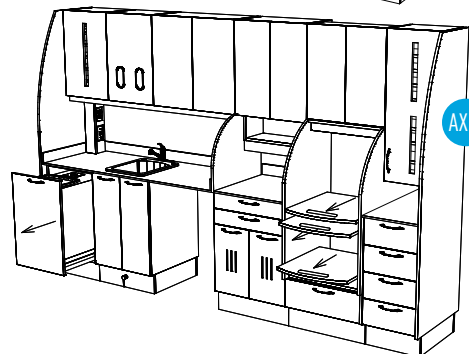
| Cabinet | Promo Colors | Solid Surface | Retail |
|---------|--------------|---------------|-------------|
| AXST10 | | • | \$24,960.00 |
| AXST10L | • | | \$23,186.00 |
| AXST11 | | • | \$25,635.00 |
| AXST11L | • | | \$23,639.00 |
| AXST12 | | • | \$26,309.00 |
| AXST12L | • | | \$24,092.00 |

OPTIONS

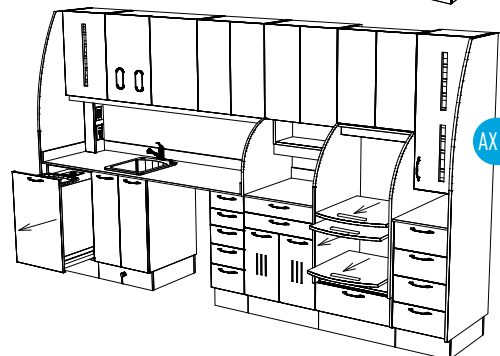
| Optional Accessories | Part Number | Retail | Select |
|--|---------------|----------|--------------------------|
| High Volume Evacuator (HVE) Sink Side with Countertop Holder | MCHVE1 | \$164.00 | <input type="checkbox"/> |
| Tapmaster Hands Free Water Activation System | MP1775 | Included | <input type="checkbox"/> |
| Clean and Dirty (Blue/Red) Indicator Lights | MPSLBH/MPSLRH | Included | <input type="checkbox"/> |
| LED Task Lighting - 45" | MPTL45H | Included | <input type="checkbox"/> |
| Storage Cabinet in Lieu of Washer Opening | LS12425S | \$912.00 | <input type="checkbox"/> |
| <i>Reverse Configuration Available. Please specify</i> | | | <input type="checkbox"/> |



AX 10



AX 11



AX 12

NEW RETRACTION SYSTEM

An effective solution to your tubing clutter



Increase productivity and save valuable time.

Our new and improved retraction system provides you with a safe & organized work environment that increases productivity while saving valuable time.

- Our exceptional asepsis design provides a clean, safe environment to increase workflow efficiency;
- Self contained drawer mounts under an existing counter top;
- Designed to protect fiber optic tubing and retractable cords;
- Retraction prevents tangles, trips and disorganized cords and tubing;
- Provides your office space with a clean, state-of-the-art look;
- Optional MCC Control and factory installation.

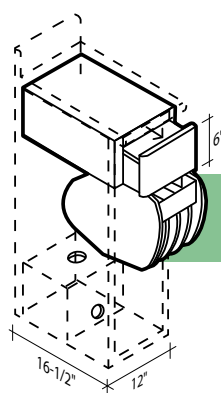
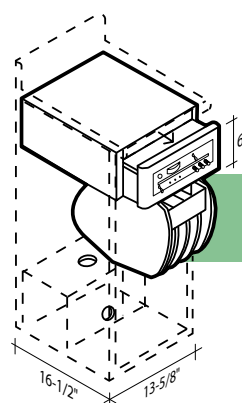
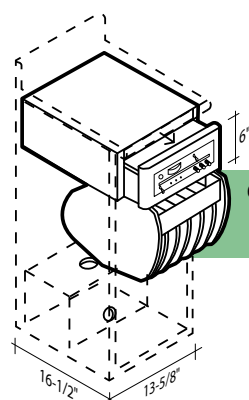
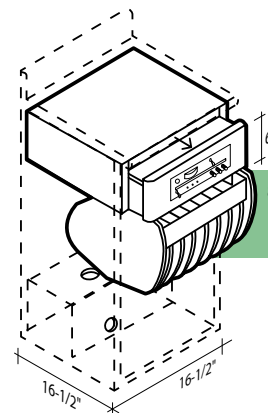


More details >

RETRACTION SYSTEM

NEW RETRACTION SYSTEM

An effective solution to your tubing clutter

Retrofit modules for New and Existing
MCC cabinet setups4 Ports
Retraction4 Ports Retraction
with optional
MCC control6 Ports Retraction
with optional
MCC control8 Ports Retraction
with optional
MCC control

For Assistant's unit, Doctor's units, Doctor's and Assistant's units.

RETRACTION PRICING

| Item | Description | Retail | Select |
|---------|---|-------------|--------------------------|
| RMCRT4A | 4 Port Tubing Retraction with Vacuum (ZHVE,ISE, A.W Syringe) and utilities | \$5,706.00 | <input type="checkbox"/> |
| RMCRT4D | 4 Port Tubing Retraction with 3 Handpiece control, A.W. syringe and Utilities | \$7,320.00 | <input type="checkbox"/> |
| RMCRT6 | 6 Port Tubing Retraction with 3 Handpiece control, A.W. Syringe, Vacuum (IHVE,ISE) | \$9,228.00 | <input type="checkbox"/> |
| RMCRT6I | 6 Port Tubing Retraction with 2 Handpiece control, A.W. syringe, Vacuum (ZHVE,ISE) | \$9,812.00 | <input type="checkbox"/> |
| RMCRT8 | 8 Port Tubing Retraction with 3 Handpiece control (2) A.W. Syringes & Vacuum (ZHVE,ISE) | \$11,668.00 | <input type="checkbox"/> |

Note: All Controls listed above include clean water.

TAILORED SOLUTIONS FOR YOUR DENTAL PRACTICE

SIGNATURE COLLECTION



For more information, contact MCC at 1-800-388-6236 or visit www.mccdental.com

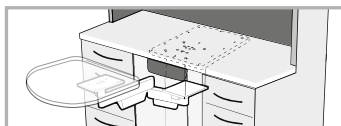
SIGNATURE COLLECTION - REAR CABINETRY

SR44A / SR44A-R**KEY FEATURES**

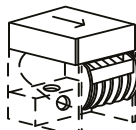
- Lift up door system for easy access to cassettes and CPU
- Valance with LED Task Lighting and panel mounted On/Off switch
- Flip down upper door with glove dispensers and storage for additional glove boxes
- Midsection includes; Medical grade Electrical outlets, USB Ports and glass shelf
- Midsection Side access storage for compact CPU
- Brushed Nickel Bar Pulls
- Soft Close Full Extension Drawers
- Water resistant Polymer Base with levelling legs
- Quartz countertop with reverse bevelled edge profile
- MCCPN502 Sliding Monitor Mount
- SR44A-R Comes with 6 Port Retraction System.

SR44A / SR44A-R SIGNATURE REAR PRICING

| Cabinet | Retail |
|---------|-------------|
| SR44A | \$10,944.00 |
| SR44A-R | \$20,172.00 |

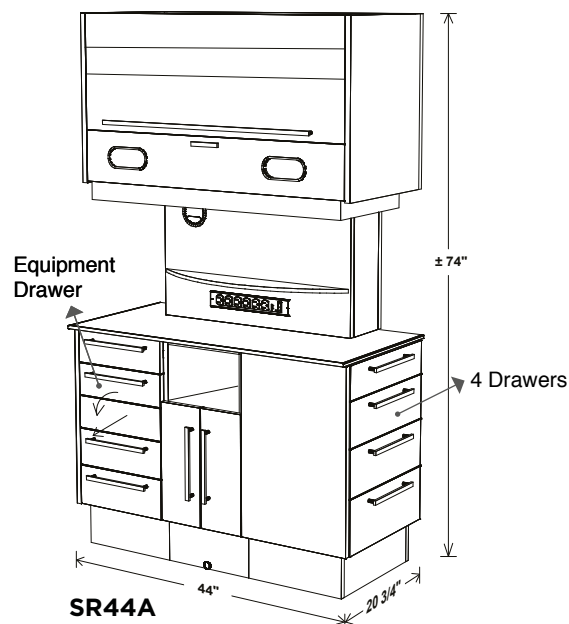
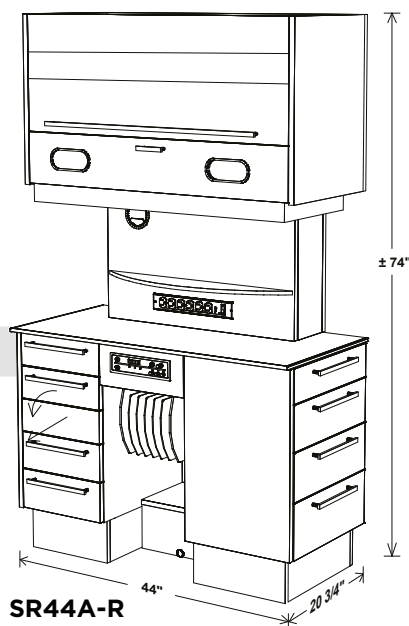
Arm Assembly

0023 806 Arm Assembly
0010 086 11" X 14 1/2" Black Plate
21" X 20" Work Table

RMCR6 Retraction

See details
on pages 7-8

RMCR6 - 6 Port Tubing Retraction
with 3 handpiece control,
A.W. Syringe, Vacuum (1HVE,1SE)

**SR44A****SR44A-R****SR44A Options for Doctor and Assistant's package**

MC2184BSPK
Under Surface 3HP Automatic
Control and Vacuum Package
with Clean Water, 2 HVE, 1 SE
Arm Assembly, Mounting
Plate and Work Surface.
Add \$5,280.00



MC1284PK - Assistant's Central Vacuum Under Surface Package with
Rotating Mount, 2 HVE, 1 SE, Clean Water & Air Only Shutoff & Regulator.
Includes Arm Assembly, Mounting Plate and Work Surface.
\$3,143.00

Doctor's Control Options

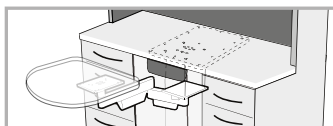
| | | |
|-----------|-----------------------------------|------------|
| MC1HPFO | Fiber Optic for 1 HP | \$850.00 |
| MC1HPFO-6 | 6-Pin Fiber Optic for 1 HP | \$1,126.00 |
| MC2HPFO | Fiber Optic for 2 HP | \$1,229.00 |
| MC2HPFO-6 | 6-Pin Fiber Optic System for 2 HP | \$1,229.00 |
| MC1HPDR | Additional HP Drive, Air only | \$277.00 |
| MC1HPWE | Additional HP, Wet | \$576.00 |

SR44F / SR44F-R**KEY FEATURES**

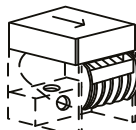
- Lift up door system for easy access to cassettes and CPU
- Valance with LED Task Lighting and panel mounted On/Off switch
- Flip down upper door with glove dispensers and storage for additional glove boxes
- Midsection includes; Medical grade Electrical outlets, USB Ports and glass shelf
- Midsection Side access storage for compact CPU
- Brushed Nickel Bar Pulls
- Soft Close Full Extension Drawers
- Water resistant Polymer Base with levelling legs
- Quartz countertop with reverse bevelled edge profile
- MCCPN502 Sliding Monitor Mount
- SR44F-R Comes with 6 Port Retraction System

SR44F / SR44F-R SIGNATURE REAR PRICING

| Cabinet | Retail |
|---------|-------------|
| SR44F | \$10,757.00 |
| SR44F-R | \$19,985.00 |

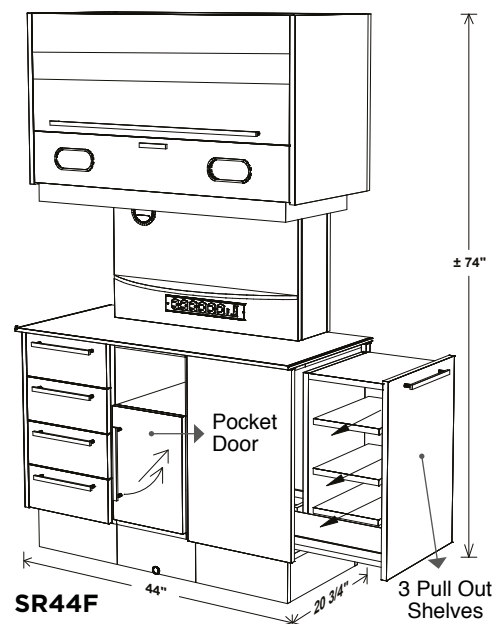
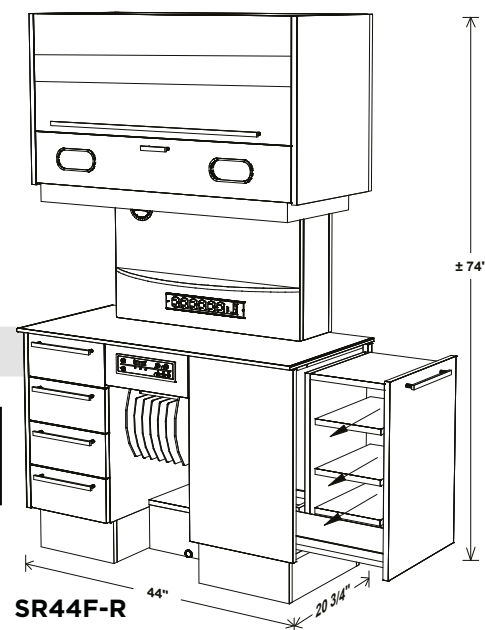
Arm Assembly

0023 806 Arm Assembly
0010 086 11" X 14 1/2" Black Plate
21" X 20" Work Table

RMCRT6 Retraction

See details
on pages 7-8

RMCRT6 - 6 Port Tubing Retraction
with 3 handpiece control,
A.W. Syringe, Vacuum (1HVE,1SE)

**SR44F****SR44F-R****SR44F Options for Doctor and Assistant's package**

MC2184BSPK
Under Surface 3HP Automatic
Control and Vacuum Package
with Clean Water, 2 HVE, 1 SE
Arm Assembly, Mounting
Plate and Work Surface.
Add \$5,280.00



MC1284PK - Assistant's Central Vacuum Under Surface Package with
Rotating Mount, 2 HVE, 1 SE, Clean Water & Air Only Shutoff & Regulator.
Includes Arm Assembly, Mounting Plate and Work Surface.
\$3,143.00

Doctor's Control Options

| | | |
|-----------|-----------------------------------|------------|
| MC1HPFO | Fiber Optic for 1 HP | \$850.00 |
| MC1HPFO-6 | 6-Pin Fiber Optic for 1 HP | \$1,126.00 |
| MC2HPFO | Fiber Optic for 2 HP | \$1,229.00 |
| MC2HPFO-6 | 6-Pin Fiber Optic System for 2 HP | \$1,229.00 |
| MC1HPDR | Additional HP Drive, Air only | \$277.00 |
| MC1HPWE | Additional HP, Wet | \$576.00 |

SIGNATURE COLLECTION - REAR CABINETRY

SR44M / SR44M-R

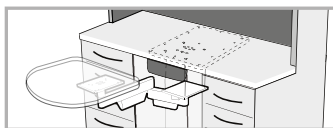
KEY FEATURES

- Lift up door system for easy access to cassettes and CPU
- Valance with LED Task Lighting and panel mounted On/Off switch
- Flip down upper door with glove dispensers and storage for additional glove boxes
- Midsection includes; Medical grade Electrical outlets, USB Ports and glass shelf
- Midsection Side access storage for compact CPU
- Brushed Nickel Bar Pulls
- Soft Close Full Extension Drawers
- Water resistant Polymer Base with levelling legs
- Quartz countertop with reverse bevelled edge profile
- MCCPN502 Sliding Monitor Mount
- SR44M-R Comes with 6 Port Retraction System
- Swing out shelves

SR44M / SR44M-R SIGNATURE REAR PRICING

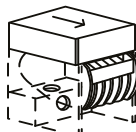
| Cabinet | Retail |
|---------|-------------|
| SR44M | \$11,531.00 |
| SR44M-R | \$20,759.00 |

Arm Assembly



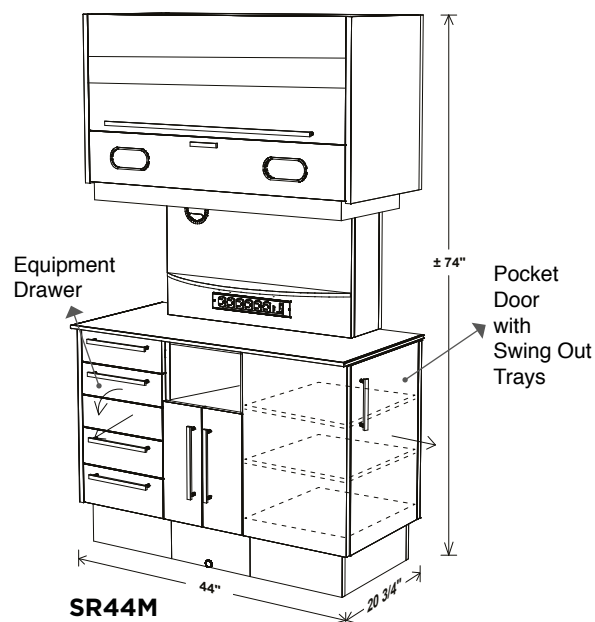
0023 806 Arm Assembly
0010 086 11" X 14 1/2" Black Plate
21" X 20" Work Table

RMCRT6 Retraction

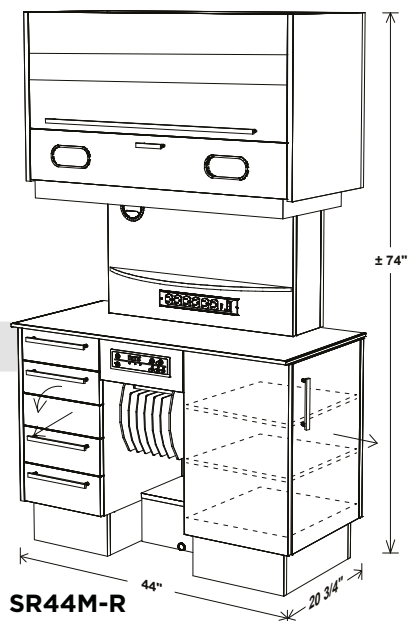


See details
on pages 7-8

RMCRT6 - 6 Port Tubing Retraction
with 3 handpiece control,
A.W. Syringe, Vacuum (1HVE,1SE)



SR44M



SR44M-R

SR44M Options for Doctor and Assistant's package



MC2184BSPK
Under Surface 3HP Automatic
Control and Vacuum Package
with Clean Water, 2 HVE, 1 SE
Arm Assembly, Mounting
Plate and Work Surface.
Add \$5,280.00



MC1284PK - Assistant's Central Vacuum Under Surface Package with
Rotating Mount, 2 HVE, 1 SE, Clean Water & Air Only Shutoff & Regulator.
Includes Arm Assembly, Mounting Plate and Work Surface.
\$3,143.00

Doctor's Control Options

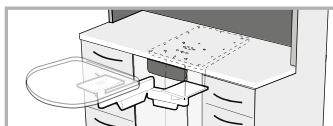
| | | |
|-----------|-----------------------------------|------------|
| MC1HPFO | Fiber Optic for 1 HP | \$850.00 |
| MC1HPFO-6 | 6-Pin Fiber Optic for 1 HP | \$1,126.00 |
| MC2HPFO | Fiber Optic for 2 HP | \$1,229.00 |
| MC2HPFO-6 | 6-Pin Fiber Optic System for 2 HP | \$1,229.00 |
| MC1HPDR | Additional HP Drive, Air only | \$277.00 |
| MC1HPWE | Additional HP, Wet | \$576.00 |

SR44V / SR44V-R**KEY FEATURES**

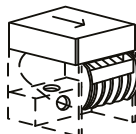
- Lift up door system for easy access to cassettes and CPU
- Valance with LED Task Lighting and panel mounted On/Off switch
- Flip down upper door with glove dispensers and storage for additional glove boxes
- Midsection includes; Medical grade Electrical outlets, USB Ports and glass shelf
- Midsection Side access storage for compact CPU
- Brushed Nickel Bar Pulls
- Soft Close Full Extension Drawers
- Water resistant Polymer Base with levelling legs
- Quartz countertop with reverse bevelled edge profile
- MCCPN502 Sliding Monitor Mount
- SR44V-R Comes with 6 Port Retraction System

SR44V / SR44V-R SIGNATURE REAR PRICING

| Cabinet | Retail |
|---------|-------------|
| SR44V | \$9,242.00 |
| SR44V-R | \$18,470.00 |

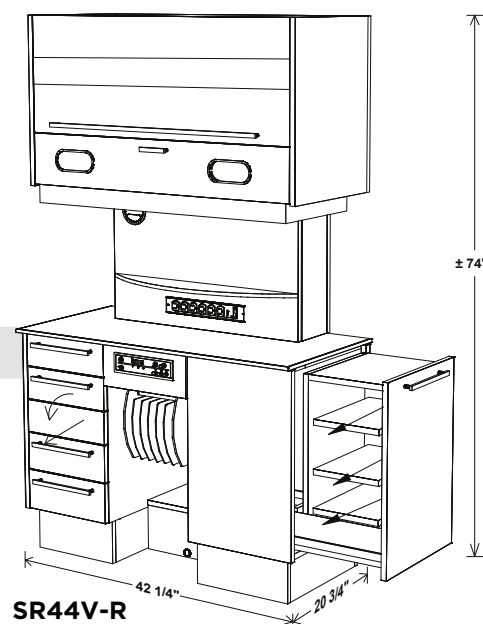
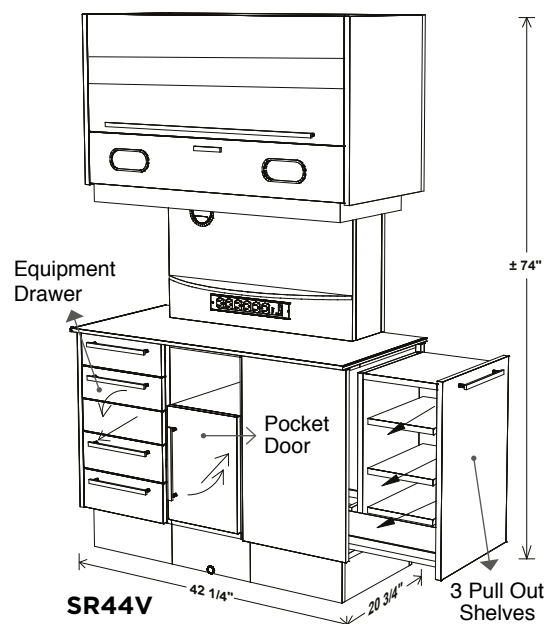
Arm Assembly

0023 806 Arm Assembly
0010 086 11" X 14 1/2" Black Plate
21" X 20" Work Table

RMCR6 Retraction

See details
on pages 7-8

RMCR6 - 6 Port Tubing Retraction
with 3 handpiece control,
A.W. Syringe, Vacuum (1HVE,1SE)

**SR44V Options for Doctor and Assistant's package**

MC2184BSPK
Under Surface 3HP Automatic
Control and Vacuum Package
with Clean Water, 2 HVE, 1 SE
Arm Assembly, Mounting
Plate and Work Surface.
Add \$5,280.00



MC1284PK - Assistant's Central Vacuum Under Surface Package with
Rotating Mount, 2 HVE, 1 SE, Clean Water & Air Only Shutoff & Regulator.
Includes Arm Assembly, Mounting Plate and Work Surface.
\$3,143.00

Doctor's Control Options

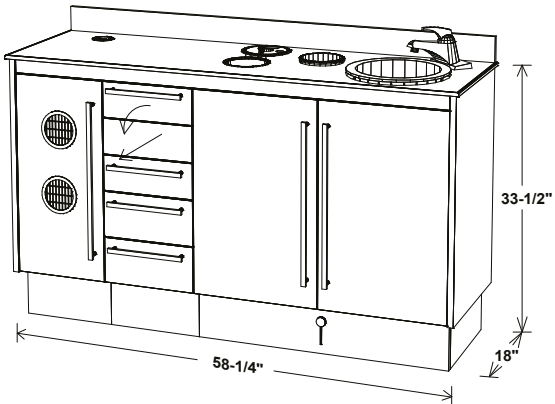
| | | |
|-----------|-----------------------------------|------------|
| MC1HPFO | Fiber Optic for 1 HP | \$850.00 |
| MC1HPFO-6 | 6-Pin Fiber Optic for 1 HP | \$1,126.00 |
| MC2HPFO | Fiber Optic for 2 HP | \$1,229.00 |
| MC2HPFO-6 | 6-Pin Fiber Optic System for 2 HP | \$1,229.00 |
| MC1HPDR | Additional HP Drive, Air only | \$277.00 |
| MC1HPWE | Additional HP, Wet | \$576.00 |

SIGNATURE COLLECTION - SIDE CABINETRY

S100

KEY FEATURES

- Quartz countertop with reverse bevelled edge profile
- Undermounted stainless steel sink
- PVC edging
- MCC's new modern design
- Vented CPU storage
- Integrated receptacles for sharps, waste and bio waste
- Hardware and plumbing fixtures included
- Tapmaster hands free water activation
- Brushed nickel bar pulls
- Soft close drawers and doors
- Water resistant Polymer Base with levelling legs



S400 SIGNATURE SIDE CABINET PRICING

| Cabinet | Retail |
|---------|------------|
| S100 | \$8,704.00 |

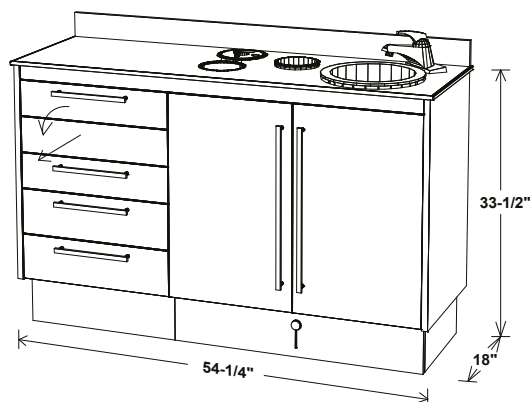
OPTIONS

| Optional Accessories | Part Number | Retail | Select |
|-------------------------------|-------------|----------|--------------------------|
| Soap Dispenser | MP3M | \$138.00 | <input type="checkbox"/> |
| S100R - Reverse Configuration | | | <input type="checkbox"/> |



S400**KEY FEATURES**

- Quartz countertop with reverse bevelled edge profile
- Undermounted stainless steel sink
- PVC edging
- MCC's new modern design
- Integrated receptacles for sharps, waste and bio waste
- Hardware and plumbing fixtures included
- Tapmaster hands free water activation
- Brushed nickel bar pulls
- Soft close drawers and doors
- Water resistant Polymer Base with levelling legs

**S400 SIGNATURE SIDE CABINET PRICING**

| Cabinet | Retail |
|---------|------------|
| S400 | \$8,106.00 |

OPTIONS

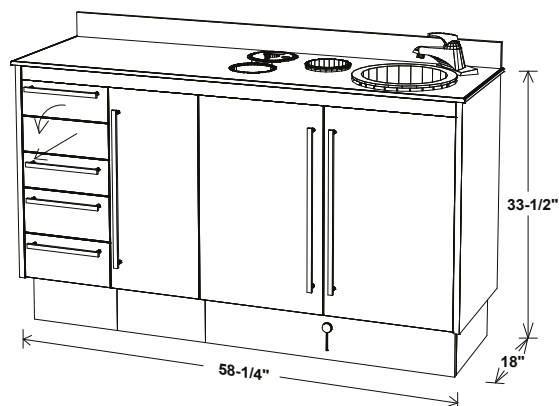
| Optional Accessories | Part Number | Retail | Select |
|--------------------------------------|-------------|----------|--------------------------|
| Soap Dispenser | MP3M | \$138.00 | <input type="checkbox"/> |
| <i>S400R - Reverse Configuration</i> | | | <input type="checkbox"/> |



SIGNATURE COLLECTION - SIDE CABINETRY

S420**KEY FEATURES**

- Quartz countertop with reverse bevelled edge profile
- Undermounted stainless steel sink
- PVC edging
- MCC's new modern design
- Integrated receptacles for sharps, waste and bio waste
- Hardware and plumbing fixtures included
- Tapmaster hands free water activation
- Brushed nickel bar pulls
- Soft close drawers and doors
- Water resistant Polymer Base with levelling legs

**S420 SIGNATURE SIDE CABINET PRICING**

| Cabinet | Retail |
|---------|------------|
| S420 | \$8,704.00 |

OPTIONS

| Optional Accessories | Part Number | Retail | Select |
|--------------------------------------|-------------|----------|--------------------------|
| Soap Dispenser | MP3M | \$138.00 | <input type="checkbox"/> |
| <i>S420R - Reverse Configuration</i> | | | <input type="checkbox"/> |



CUSTOM CABINETS



CUSTOM CABINETS

No two offices are alike.

That's why it's important for practices to choose their **custom cabinets** to match his or her unique workflow and space. **Custom cabinets** are a cost-effective way to guarantee the perfect solution for having all the instruments and equipment close at hand and in just the right place.

At MCC, we strive to maximize the functionality of our **custom cabinets**, according to your needs and requirements. Our **custom cabinets** are professionally designed by CDC & IPAC standards.



TAILORED COLLECTION

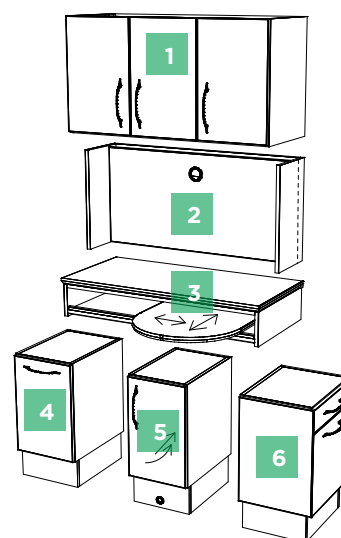


TAILORED COLLECTION - MULTI-SLIDE WORK SURFACE

MULTI-SLIDE REAR CABINETRY

KEY FEATURES

- Optional solid surface or Quartz countertop
- PVC edging
- MCC's new modern design
- Upper cabinets can be intergrated into cabinet construction or wall mounted
- Left/right sliding pull out work surface
- Ability to accommodate both left and right handed dentists
- Unlimited configuration options
- Soft-close drawers and doors



OPTIONS

| | | | | | |
|--|-------------|--------------|---------------|------------|--------------------------|
| Upper Module (1) | Part Number | | | Retail | Select |
| 42" Upper with 6 Shelves | MDU426 | | | \$1,075.00 | <input type="checkbox"/> |
| 42" Upper with CPU in center/2 vents | MDU42CPU | | | \$1,153.00 | <input type="checkbox"/> |
| 42" Upper with Pass Thru & Finished Back | MDU42PT | | | \$1,712.00 | <input type="checkbox"/> |
| Angled Upper Module (1) | Part Number | | | Retail | Select |
| Solid Door with Vented CPU Storage | TLU42 | | | \$2,673.00 | <input type="checkbox"/> |
| 2 Door Glass Insert with Vented CPU Storage | TLUG42 | | | \$2,876.00 | <input type="checkbox"/> |
| Solid Door Pass Thru and Finished Back with Vented CPU Storage | TLUP42 | | | \$3,090.00 | <input type="checkbox"/> |
| 4 Door Glass Pass Thru and Finished Back with Vented CPU Storage | TLUPG42 | | | \$3,721.00 | <input type="checkbox"/> |
| Mid-Section Module (2) | Part Number | | | Retail | Select |
| Mid-Section with Panel Mount Housing | MDMPM | | | \$1,024.00 | <input type="checkbox"/> |
| Mid-Section with Half Flip Down | MDMHFD | | | \$1,094.00 | <input type="checkbox"/> |
| Mid-Section with Full Flip Down | MDMFFD | | | \$1,191.00 | <input type="checkbox"/> |
| Mid-Section with Full Utility Panel | MDMUP | | | \$1,120.00 | <input type="checkbox"/> |
| Mid-Section with Shelf | MDMWS | | | \$1,011.00 | <input type="checkbox"/> |
| Mid-Section with Wire Chase | MDMWC | | | \$901.00 | <input type="checkbox"/> |
| Multi-Slide Work Surface (3) | Part Number | Promo Colors | Solid Surface | Retail | Select |
| Multi-Slide with Promo Colors Top | MDMS42L | • | | \$895.00 | <input type="checkbox"/> |
| Multi-Slide with Solid Surface Top | MDMS42CC | | • | \$1,235.00 | <input type="checkbox"/> |
| Base Module - Left (4) | Part Number | Promo Colors | Solid Surface | Retail | Select |
| Single Cupboard | MDLSC14L | • | | \$757.00 | <input type="checkbox"/> |
| Single Cupboard | MDLSC14CC | | • | \$986.00 | <input type="checkbox"/> |
| 1 Drawer with Cupboard | MDLDC14L | • | | \$855.00 | <input type="checkbox"/> |
| 1 Drawer with Cupboard | MDLDC14CC | | • | \$1,082.00 | <input type="checkbox"/> |
| 3 Drawers with Equipment | MDL3D14L | • | | \$979.00 | <input type="checkbox"/> |
| 3 Drawers with Equipment | MDL3D14CC | | • | \$1,206.00 | <input type="checkbox"/> |
| 4 Drawers - 14" | MDL4D14L | • | | \$1,012.00 | <input type="checkbox"/> |
| 4 Drawers - 14" | MDL4D14CC | | • | \$1,238.00 | <input type="checkbox"/> |
| 5 Drawers - 14" | MDL5D14L | • | | \$1,109.00 | <input type="checkbox"/> |
| 5 Drawers - 14" | MDL5D14CC | | • | \$1,334.00 | <input type="checkbox"/> |
| Base Module - Center (5) | Part Number | Promo Colors | Solid Surface | Retail | Select |
| Double Door Utility | MDLDD13L | • | | \$1,015.00 | <input type="checkbox"/> |
| Double Door Utility | MDLDD13CC | | • | \$1,225.00 | <input type="checkbox"/> |
| Pocket Door Storage | MDLPD13L | • | | \$1,015.00 | <input type="checkbox"/> |
| Pocket Door Storage | MDLPD13CC | | • | \$1,225.00 | <input type="checkbox"/> |
| Control Drawer with Chase | MDLCD13L | | | \$656.00 | <input type="checkbox"/> |

MULTI-SLIDE REAR CABINETRY

OPTIONS

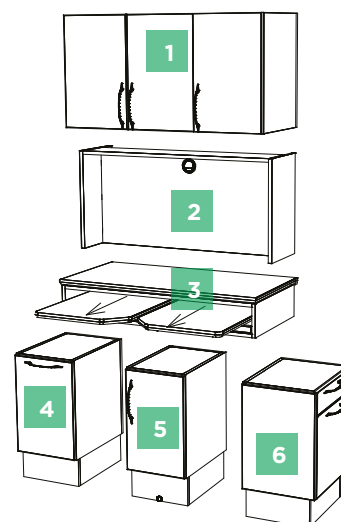
| Base Module - Right (6) | Part Number | Promo Colors | Solid Surface | Retail | Select |
|--|-------------|--------------|---------------|------------|--------------------------|
| Single Cupboard | MDLSC14L | • | | \$757.00 | <input type="checkbox"/> |
| Single Cupboard | MDLSC14CC | | • | \$986.00 | <input type="checkbox"/> |
| 1 Drawer with Cupboard | MDLDC14L | • | | \$855.00 | <input type="checkbox"/> |
| 1 Drawer with Cupboard | MDLDC14CC | | • | \$1,082.00 | <input type="checkbox"/> |
| 3 Drawers with Equipment | MDL3D14L | • | | \$979.00 | <input type="checkbox"/> |
| 3 Drawers with Equipment | MDL3D14CC | | • | \$1,206.00 | <input type="checkbox"/> |
| 5 Drawers - 14" | MDL5D14L | • | | \$1,109.00 | <input type="checkbox"/> |
| 5 Drawers - 14" | MDL5D14CC | | • | \$1,334.00 | <input type="checkbox"/> |
| 2 Drawers with Slide Out | MDLSO15L | • | | \$1,153.00 | <input type="checkbox"/> |
| 2 Drawers with Slide Out | MDLSO15CC | | • | \$1,394.00 | <input type="checkbox"/> |
| 4 Drawers | MDL4D15L | • | | \$1,012.00 | <input type="checkbox"/> |
| 4 Drawers | MDL4D15CC | | • | \$1,255.00 | <input type="checkbox"/> |
| Pocket Door with 2 Swing Out Trays | MDLPD15L | • | | \$1,209.00 | <input type="checkbox"/> |
| Pocket Door with 2 Swing Out Trays | MDLPD15CC | | • | \$1,450.00 | <input type="checkbox"/> |
| Finished Back on Complete Unit | MDMFB | | | \$567.00 | <input type="checkbox"/> |
| Finished Back on Mid-Section Only | MDMFBMS | | | \$193.00 | <input type="checkbox"/> |
| Finished Back on Lower-Section Only | MDMFBLS | | | \$220.00 | <input type="checkbox"/> |
| Sink Module - Left or Right | Part Number | Promo Colors | Solid Surface | Retail | Select |
| 24" Width Upper Storage with Glove, Cup & Towel Dispenser | U24BCT | | | \$979.00 | <input type="checkbox"/> |
| 24" Width with Double Door Storage base with Sink & Waste Drop | B24DDSL | • | | \$1,841.00 | <input type="checkbox"/> |
| 24" Width with Double Door Storage base with Sink & Waste Drop | B24DDSCC | | • | \$2,410.00 | <input type="checkbox"/> |
| Optional Accessories | Part Number | | | Retail | Select |
| Pivoting Monitor Mount | MCGX270 | | | \$352.00 | <input type="checkbox"/> |
| Sliding Monitor Mount | MCCPN502 | | | \$894.00 | <input type="checkbox"/> |
| Under Surface 3HP Automatic Control and Vacuum Package with Clear Water | MC2184BS | | | \$3,696.00 | <input type="checkbox"/> |
| Automatic Mini Head 3 HP Control with Swivel Slide Mount and Clean Water | MCT600PK | | | \$3,256.00 | <input type="checkbox"/> |
| Vacuum kit on extended bar, 1HVE & 1 SE | MC1406CS | | | \$297.00 | <input type="checkbox"/> |
| Fiber Optic for 1 HP | MC1HPFO | | | \$850.00 | <input type="checkbox"/> |
| 6-Pin Fiber Optic for 1 HP with Time Delay | MC1HPFO-6 | | | \$1,126.00 | <input type="checkbox"/> |
| Fiber Optic for 2 HP with Time Delay Kit | MC2HPFO | | | \$1,229.00 | <input type="checkbox"/> |
| 6-Pin Fiber Optic System for 2 HP with Time Delay Kit | MC2HPFO-6 | | | \$1,229.00 | <input type="checkbox"/> |
| Additional Universal Autoclavable HVE Position with Tubing | MC1HVE | | | \$104.00 | <input type="checkbox"/> |
| Additional HP Wet | MC1HPWE | | | \$576.00 | <input type="checkbox"/> |
| Additional HP Drive, Air only | MC1HPDR | | | \$277.00 | <input type="checkbox"/> |
| Assistant's Vacuum Package 1 HVE, 1 SE, with Quad-Bar | MCHSVK3 | | | \$579.00 | <input type="checkbox"/> |
| Vacuum Utilities Less Housing and Cover | MCUTILV | | | \$411.00 | <input type="checkbox"/> |
| Self Contained (Wall Mounted) Clean Water System | MCSCWM1 | | | \$319.00 | <input type="checkbox"/> |
| 3 Port USB Docking Station with Power Supply | MP16N | | | \$220.00 | <input type="checkbox"/> |
| GFI Duplex Outlet with BX Wire & Box | MP13GFIKT | | | \$254.00 | <input type="checkbox"/> |
| Medical Grade Power Bar | MP13MG | | | \$281.00 | <input type="checkbox"/> |
| 3/8" Female Air Quick Disconnect 1/4" Female Water Quick Disconnect | FAQD38 | | | \$233.00 | <input type="checkbox"/> |
| Sharps Container 1.5Qt | MBIIS | | | \$206.00 | <input type="checkbox"/> |
| LED Task Lighting - 24" | MPTL24LH | | | \$225.00 | <input type="checkbox"/> |
| Assistant's Central Vacuum Under Surface Package with Rotating Mount | MC1284 | | | \$2,106.00 | <input type="checkbox"/> |
| Clean Water & Air Only Shutoff & Regulator | MCRVK1 | | | \$303.00 | <input type="checkbox"/> |

TAILORED COLLECTION - DUAL-SLIDE WORK SURFACE

DUAL-SLIDE REAR CABINETRY

KEY FEATURES

- Optional solid surface or Quartz countertop
- PVC edging
- MCC's new modern design
- Upper cabinets can be intergrated into cabinet construction or wall mounted
- Left and right sliding pull out work surface
- Ability to accommodate both left and right handed dentists
- Unlimited configuration options
- Soft-close drawers and doors



OPTIONS

| | | | | | |
|--|-------------|--------------|---------------|------------|--------------------------|
| Upper Module (1) | Part Number | | | Retail | Select |
| 42" Upper with 6 Shelves | MDU426 | | | \$1,075.00 | <input type="checkbox"/> |
| 42" Upper with CPU in center/2 vents | MDU42CPU | | | \$1,153.00 | <input type="checkbox"/> |
| 42" Upper with Pass Thru & Finished Back | MDU42PT | | | \$1,712.00 | <input type="checkbox"/> |
| Angled Upper Module (1) | Part Number | | | Retail | Select |
| Solid Door with Vented CPU Storage | TLU42 | | | \$2,673.00 | <input type="checkbox"/> |
| 2 Door Glass Insert with Vented CPU Storage | TLUG42 | | | \$2,876.00 | <input type="checkbox"/> |
| Solid Door Pass Thru and Finished Back with Vented CPU Storage | TLUP42 | | | \$3,090.00 | <input type="checkbox"/> |
| 4 Door Glass Pass Thru and Finished Back with Vented CPU Storage | TLUPG42 | | | \$3,721.00 | <input type="checkbox"/> |
| Mid-Section Module (2) | Part Number | | | Retail | Select |
| Mid-Section with Panel Mount Housing | MDMPM | | | \$1,024.00 | <input type="checkbox"/> |
| Mid-Section with Half Flip Down | MDMHFD | | | \$1,094.00 | <input type="checkbox"/> |
| Mid-Section with Full Flip Down | MDMFFD | | | \$1,191.00 | <input type="checkbox"/> |
| Mid-Section with Full Utility Panel | MDMUP | | | \$1,120.00 | <input type="checkbox"/> |
| Mid-Section with Shelf | MDMWS | | | \$1,011.00 | <input type="checkbox"/> |
| Mid-Section with Wire Chase | MDMWC | | | \$901.00 | <input type="checkbox"/> |
| Dual-Slide Work Surface (3) | Part Number | Promo Colors | Solid Surface | Retail | Select |
| Dual-Slide with Promo Colors Top | MDDS42L | • | | \$895.00 | <input type="checkbox"/> |
| Dual-Slide with Solid Surface Top | MDDS42CC | | • | \$1,235.00 | <input type="checkbox"/> |
| Base Module - Left (4) | Part Number | Promo Colors | Solid Surface | Retail | Select |
| Single Cupboard | MDLSC14L | • | | \$757.00 | <input type="checkbox"/> |
| Single Cupboard | MDLSC14CC | | • | \$986.00 | <input type="checkbox"/> |
| 1 Drawer with Cupboard | MDLDC14L | • | | \$855.00 | <input type="checkbox"/> |
| 1 Drawer with Cupboard | MDLDC14CC | | • | \$1,082.00 | <input type="checkbox"/> |
| 3 Drawers with Equipment | MDL3D14L | • | | \$979.00 | <input type="checkbox"/> |
| 3 Drawers with Equipment | MDL3D14CC | | • | \$1,206.00 | <input type="checkbox"/> |
| 4 Drawers - 14" | MDL4D14L | • | | \$1,012.00 | <input type="checkbox"/> |
| 4 Drawers - 14" | MDL4D14CC | | • | \$1,238.00 | <input type="checkbox"/> |
| 5 Drawers - 14" | MDL5D14L | • | | \$1,109.00 | <input type="checkbox"/> |
| 5 Drawers - 14" | MDL5D14CC | | • | \$1,334.00 | <input type="checkbox"/> |
| Base Module - Center (5) | Part Number | Promo Colors | Solid Surface | Retail | Select |
| Double Door Utility | MDLDD13L | • | | \$1,015.00 | <input type="checkbox"/> |
| Double Door Utility | MDLDD13CC | | • | \$1,225.00 | <input type="checkbox"/> |
| Pocket Door Storage | MDLPD13L | • | | \$1,015.00 | <input type="checkbox"/> |
| Pocket Door Storage | MDLPD13CC | | • | \$1,225.00 | <input type="checkbox"/> |
| Control Drawer with Chase | MDLCD13L | | | \$656.00 | <input type="checkbox"/> |

DUAL-SLIDE REAR CABINETRY

OPTIONS

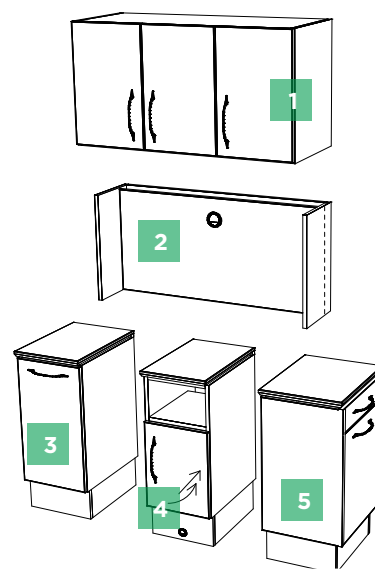
| Base Module - Right (6) | Part Number | Promo Colors | Solid Surface | Retail | Select |
|--|-------------|--------------|---------------|------------|--------------------------|
| Single Cupboard | MDLSC14L | • | | \$757.00 | <input type="checkbox"/> |
| Single Cupboard | MDLSC14CC | | • | \$986.00 | <input type="checkbox"/> |
| 1 Drawer with Cupboard | MDLDC14L | • | | \$855.00 | <input type="checkbox"/> |
| 1 Drawer with Cupboard | MDLDC14CC | | • | \$1,082.00 | <input type="checkbox"/> |
| 3 Drawers with Equipment | MDL3D14L | • | | \$979.00 | <input type="checkbox"/> |
| 3 Drawers with Equipment | MDL3D14CC | | • | \$1,206.00 | <input type="checkbox"/> |
| 5 Drawers - 14" | MDL5D14L | • | | \$1,109.00 | <input type="checkbox"/> |
| 5 Drawers - 14" | MDL5D14CC | | • | \$1,334.00 | <input type="checkbox"/> |
| 2 Drawers with Slide Out | MDLSO15L | • | | \$1,153.00 | <input type="checkbox"/> |
| 2 Drawers with Slide Out | MDLSO15CC | | • | \$1,394.00 | <input type="checkbox"/> |
| 4 Drawers | MDL4D15L | • | | \$1,012.00 | <input type="checkbox"/> |
| 4 Drawers | MDL4D15CC | | • | \$1,255.00 | <input type="checkbox"/> |
| Pocket Door with 2 Swing Out Trays | MDLPD15L | • | | \$1,209.00 | <input type="checkbox"/> |
| Pocket Door with 2 Swing Out Trays | MDLPD15CC | | • | \$1,450.00 | <input type="checkbox"/> |
| Finished Back on Complete Unit | MDMFB | | | \$567.00 | <input type="checkbox"/> |
| Finished Back on Mid-Section Only | MDMFBMS | | | \$193.00 | <input type="checkbox"/> |
| Finished Back on Lower-Section Only | MDMFBLS | | | \$220.00 | <input type="checkbox"/> |
| Sink Module - Left or Right | Part Number | Promo Colors | Solid Surface | Retail | Select |
| 24" Width Upper Storage with Glove, Cup & Towel Dispenser | U24BCT | | | \$979.00 | <input type="checkbox"/> |
| 24" Width with Double Door Storage base with Sink & Waste Drop | B24DDSL | • | | \$1,841.00 | <input type="checkbox"/> |
| 24" Width with Double Door Storage base with Sink & Waste Drop | B24DDSCC | | • | \$2,410.00 | <input type="checkbox"/> |
| Optional Accessories | Part Number | | | Retail | Select |
| Pivoting Monitor Mount | MCGX270 | | | \$352.00 | <input type="checkbox"/> |
| Sliding Monitor Mount | MCCPN502 | | | \$894.00 | <input type="checkbox"/> |
| Under Surface 3HP Automatic Control and Vacuum Package with Clear Water | MC2184BS | | | \$3,696.00 | <input type="checkbox"/> |
| Automatic Mini Head 3 HP Control with Swivel Slide Mount and Clean Water | MCT600PK | | | \$3,256.00 | <input type="checkbox"/> |
| Vacuum kit on extended bar, 1HVE & 1 SE | MC1406CS | | | \$297.00 | <input type="checkbox"/> |
| Fiber Optic for 1 HP | MC1HPFO | | | \$850.00 | <input type="checkbox"/> |
| 6-Pin Fiber Optic for 1 HP with Time Delay | MC1HPFO-6 | | | \$1,126.00 | <input type="checkbox"/> |
| Fiber Optic for 2 HP with Time Delay Kit | MC2HPFO | | | \$1,229.00 | <input type="checkbox"/> |
| 6-Pin Fiber Optic System for 2 HP with Time Delay Kit | MC2HPFO-6 | | | \$1,229.00 | <input type="checkbox"/> |
| Additional Universal Autoclavable HVE Position with Tubing | MC1HVE | | | \$104.00 | <input type="checkbox"/> |
| Additional HP Wet | MC1HPWE | | | \$576.00 | <input type="checkbox"/> |
| Additional HP Drive, Air only | MC1HPDR | | | \$277.00 | <input type="checkbox"/> |
| Assistant's Vacuum Package 1 HVE, 1 SE, with Quad-Bar | MCHSVK3 | | | \$579.00 | <input type="checkbox"/> |
| Vacuum Utilities Less Housing and Cover | MCUTILV | | | \$411.00 | <input type="checkbox"/> |
| Self Contained (Wall Mounted) Clean Water System | MCSCWM1 | | | \$319.00 | <input type="checkbox"/> |
| 3 Port USB Docking Station with Power Supply | MP16N | | | \$220.00 | <input type="checkbox"/> |
| GFI Duplex Outlet with BX Wire & Box | MP13GFIKT | | | \$254.00 | <input type="checkbox"/> |
| Medical Grade Power Bar | MP13MG | | | \$281.00 | <input type="checkbox"/> |
| 3/8" Female Air Quick Disconnect 1/4" Female Water Quick Disconnect | FAQD38 | | | \$233.00 | <input type="checkbox"/> |
| Sharps Container 1.5Qt | MBIIS | | | \$206.00 | <input type="checkbox"/> |
| LED Task Lighting - 24" | MPTL24LH | | | \$225.00 | <input type="checkbox"/> |
| Assistant's Central Vacuum Under Surface Package with Rotating Mount | MC1284 | | | \$2,106.00 | <input type="checkbox"/> |
| Clean Water & Air Only Shutoff & Regulator | MCRVK1 | | | \$303.00 | <input type="checkbox"/> |

TAILORED COLLECTION - FLOATING WORK SURFACE

FLOATING REAR CABINETRY

KEY FEATURES

- Optional solid surface or Quartz countertop
- PVC edging
- MCC's new modern design
- Upper cabinets can be intergrated into cabinet construction or wall mounted
- Option for arm mounted work surface
- Ability to accommodate both left and right handed dentists
- Unlimited configuration options
- Soft-close drawers and doors



OPTIONS

| | | | | | |
|--|-------------|--------------|---------------|------------|--------------------------|
| Upper Module (1) | Part Number | | | Retail | Select |
| 42" Upper with 6 Shelves | MDU426 | | | \$1,075.00 | <input type="checkbox"/> |
| 42" Upper with CPU in center/2 vents | MDU42CPU | | | \$1,153.00 | <input type="checkbox"/> |
| 42" Upper with Pass Thru & Finished Back | MDU42PT | | | \$1,712.00 | <input type="checkbox"/> |
| Angled Upper Module (1) | Part Number | | | Retail | Select |
| Solid Door with Vented CPU Storage | TLU42 | | | \$2,673.00 | <input type="checkbox"/> |
| 2 Door Glass Insert with Vented CPU Storage | TLUG42 | | | \$2,876.00 | <input type="checkbox"/> |
| Solid Door Pass Thru and Finished Back with Vented CPU Storage | TLUP42 | | | \$3,090.00 | <input type="checkbox"/> |
| 4 Door Glass Pass Thru and Finished Back with Vented CPU Storage | TLUPG42 | | | \$3,721.00 | <input type="checkbox"/> |
| Mid-Section Module (2) | Part Number | | | Retail | Select |
| Mid-Section with Panel Mount Housing | MDMPM | | | \$1,024.00 | <input type="checkbox"/> |
| Mid-Section with Half Flip Down | MDMHFD | | | \$1,094.00 | <input type="checkbox"/> |
| Mid-Section with Full Flip Down | MDMFFD | | | \$1,191.00 | <input type="checkbox"/> |
| Mid-Section with Full Utility Panel | MDMUP | | | \$1,120.00 | <input type="checkbox"/> |
| Mid-Section with Shelf | MDMWS | | | \$1,011.00 | <input type="checkbox"/> |
| Mid-Section with Wire Chase | MDMWC | | | \$901.00 | <input type="checkbox"/> |
| Base Module - Left (3) | Part Number | Promo Colors | Solid Surface | Retail | Select |
| Single Cupboard | MDLSC14L | • | | \$757.00 | <input type="checkbox"/> |
| Single Cupboard | MDLSC14CC | | • | \$986.00 | <input type="checkbox"/> |
| 1 Drawer with Cupboard | MDLDC14L | • | | \$855.00 | <input type="checkbox"/> |
| 1 Drawer with Cupboard | MDLDC14CC | | • | \$1,082.00 | <input type="checkbox"/> |
| 4 Drawers with Equipment | MDL4DE14L | • | | \$1,076.00 | <input type="checkbox"/> |
| 4 Drawers with Equipment | MDL4DE14CC | | • | \$1,304.00 | <input type="checkbox"/> |
| 4 Drawers - 14" | MDL4D14L | • | | \$1,012.00 | <input type="checkbox"/> |
| 4 Drawers - 14" | MDL4D14CC | | • | \$1,238.00 | <input type="checkbox"/> |
| 5 Drawers - 14" | MDL5D14L | • | | \$1,109.00 | <input type="checkbox"/> |
| 5 Drawers - 14" | MDL5D14CC | | • | \$1,334.00 | <input type="checkbox"/> |
| Base Module - Center (4) | Part Number | Promo Colors | Solid Surface | Retail | Select |
| Single Cupboard | MDLSC13L | • | | \$757.00 | <input type="checkbox"/> |
| Single Cupboard | MDLSC13CC | | • | \$969.00 | <input type="checkbox"/> |
| Double Door Utility | MDLDD13L | • | | \$1,015.00 | <input type="checkbox"/> |
| Double Door Utility | MDLDD13CC | | • | \$1,225.00 | <input type="checkbox"/> |
| Full Height Double Door Utility – When arm assembly not present | MDLDD13F | • | | \$1,015.00 | <input type="checkbox"/> |
| Full Height Double Door Utility – When arm assembly not present | MDLDD13FCC | | • | \$1,225.00 | <input type="checkbox"/> |
| Pocket Door Storage | MDLPD13L | • | | \$1,015.00 | <input type="checkbox"/> |
| Pocket Door Storage | MDLPD13CC | | • | \$1,225.00 | <input type="checkbox"/> |
| Full Height Pocket Door Storage – When arm assembly not present | MDLPD13F | • | | \$1,015.00 | <input type="checkbox"/> |
| Full Height Pocket Door Storage – When arm assembly not present | MDLPD13FCC | | • | \$1,225.00 | <input type="checkbox"/> |
| Arm Assembly with Promo Colors Top | MDLAAL | • | | \$1,576.00 | <input type="checkbox"/> |
| Arm Assembly with Solid Surface Top | MDLAASS | | • | \$1,915.00 | <input type="checkbox"/> |



NOTE: Base Modules Include Countertop. Promo Colors indicates European Promotional Solid Surface.

For more information, contact MCC at 1-800-388-6236 or visit www.mccdental.com

FLOATING REAR CABINETRY

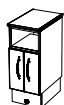
OPTIONS

| Base Module - Right (5) | Part Number | Promo Colors | Solid Surface | Retail | Select |
|--|-------------|--------------|---------------|------------|--------------------------|
| Single Cupboard | MDLSC14L | • | | \$757.00 | <input type="checkbox"/> |
| Single Cupboard | MDLSC14CC | | • | \$986.00 | <input type="checkbox"/> |
| 1 Drawer with Cupboard | MDLDC14L | • | | \$855.00 | <input type="checkbox"/> |
| 1 Drawer with Cupboard | MDLDC14CC | | • | \$1,082.00 | <input type="checkbox"/> |
| 4 Drawers with Equipment | MDL4DE14L | • | | \$1,076.00 | <input type="checkbox"/> |
| 4 Drawers with Equipment | MDL4DE14CC | | • | \$1,304.00 | <input type="checkbox"/> |
| 4 Drawers - 15" | MDL4D14L | • | | \$1,012.00 | <input type="checkbox"/> |
| 4 Drawers - 15" | MDL4D14CC | | • | \$1,238.00 | <input type="checkbox"/> |
| 4 Drawers - 15" - Side Facing | MDL5D14L | • | | \$1,109.00 | <input type="checkbox"/> |
| 4 Drawers - 15" - Side Facing | MDL5D14CC | | • | \$1,334.00 | <input type="checkbox"/> |
| 5 Drawers - 15" | MDL5D14L | • | | \$1,109.00 | <input type="checkbox"/> |
| 5 Drawers - 15" | MDL5D14CC | | • | \$1,334.00 | <input type="checkbox"/> |
| 2 Drawers with Slide Out | MDLSO15L | • | | \$1,153.00 | <input type="checkbox"/> |
| 2 Drawers with Slide Out | MDLSO15CC | | • | \$1,394.00 | <input type="checkbox"/> |
| 4 Drawers | MDL4D15L | • | | \$1,012.00 | <input type="checkbox"/> |
| 4 Drawers | MDL4D15CC | | • | \$1,255.00 | <input type="checkbox"/> |
| Pocket Door with 2 Swing Out Trays | MDLPD15L | • | | \$1,209.00 | <input type="checkbox"/> |
| Pocket Door with 2 Swing Out Trays | MDLPD15CC | | • | \$1,450.00 | <input type="checkbox"/> |
| Finished Back on Complete Unit | MDMFB | | | \$567.00 | <input type="checkbox"/> |
| Finished Back on Mid-Section Only | MDMFBMS | | | \$193.00 | <input type="checkbox"/> |
| Finished Back on Lower-Section Only | MDMFBLS | | | \$220.00 | <input type="checkbox"/> |
| Sink Module - Left or Right | Part Number | Promo Colors | Solid Surface | Retail | Select |
| 24" Width Upper Storage with Glove, Cup & Towel Dispenser | U24BCT | | | \$979.00 | <input type="checkbox"/> |
| 24" Width with Double Door Storage base with Sink & Waste Drop | B24DDSL | • | | \$1,841.00 | <input type="checkbox"/> |
| 24" Width with Double Door Storage base with Sink & Waste Drop | B24DDSCC | | • | \$2,410.00 | <input type="checkbox"/> |
| Optional Accessories | Part Number | | | Retail | Select |
| Pivoting Monitor Mount | MCGX270 | | | \$352.00 | <input type="checkbox"/> |
| Sliding Monitor Mount | MCCPN502 | | | \$894.00 | <input type="checkbox"/> |
| Under Surface 3HP Automatic Control and Vacuum Package with Clear Water | MC2184BS | | | \$3,696.00 | <input type="checkbox"/> |
| Automatic Mini Head 3 HP Control with Swivel Slide Mount and Clean Water | MCT600PK | | | \$3,256.00 | <input type="checkbox"/> |
| Vacuum kit on extended bar, 1HVE & 1 SE | MC1406CS | | | \$297.00 | <input type="checkbox"/> |
| Fiber Optic for 1 HP | MC1HPFO | | | \$850.00 | <input type="checkbox"/> |
| 6-Pin Fiber Optic for 1 HP with Time Delay | MC1HPFO-6 | | | \$1,126.00 | <input type="checkbox"/> |
| Fiber Optic for 2 HP with Time Delay Kit | MC2HPFO | | | \$1,229.00 | <input type="checkbox"/> |
| 6-Pin Fiber Optic System for 2 HP with Time Delay Kit | MC2HPFO-6 | | | \$1,229.00 | <input type="checkbox"/> |
| Assistant's Central Vacuum Under Surface Package with Rotating Mount, Clean Water & Air Only Shutoff & Regulator | MC1284 | | | \$2,106.00 | <input type="checkbox"/> |
| Routing Valve Kit with Shutoff & Regulator | MCRVK1 | | | \$303.00 | <input type="checkbox"/> |

TAILORED COLLECTION - FLOATING WORK SURFACE

FLOATING REAR CABINETRY

Base Module (4) with Floating Work Surface

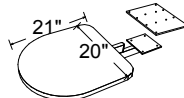


MDLDD13
Double Door Utility
Promo Colors: \$1,015.00
Solid Surface: \$1,225.00



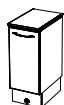
MDLPD13
Pocket Door Storage
Promo Colors: \$1,015.00
Solid Surface: \$1,225.00

ARM ASSEMBLY



MDLAA/SS
Arm Assembly with top
11" X 14" Mounting Plate
Promo Colors: \$1,576.00
Solid Surface: \$1,915.00

Base Module (4) Without Floating Work Surface



MDLSC13
Single Cupboard
Promo Colors: \$757.00
Solid Surface: \$969.00



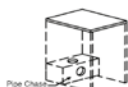
MDLDD13F
Full Height Double Door Utility -
When Arm Assembly not present
Promo Colors: \$1,015.00
Solid Surface: \$1,225.00



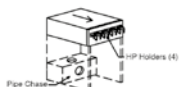
MDLPD13F
Full Height Pocket Door Storage -
When Arm Assembly not present
Promo Colors: \$1,015.00
Solid Surface: \$1,225.00



PFCS2S
Storage with
2 Slide-Out Shelves
\$225.00



PFCOEM
Open Equipment Module
with Base Chase
\$125.00



PFCHPS
Slide-Out for HP Holders
with Base Chase
\$269.00



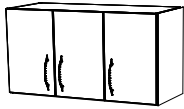
RMCRT6
Add 6 Port Tubing Retraction
with 3 Handpiece control,
A.W. Syringe, Vacuum (1HVE, 1SE). \$9,228.00

See details
on pages
7-8

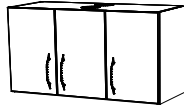
| Optional Accessories | Part Number | Retail | Select |
|--|-------------|----------|--------------------------|
| Additional Universal Autoclavable HVE Position with Tubing | MC1HVE | \$104.00 | <input type="checkbox"/> |
| Additional HP Wet | MC1HPWE | \$576.00 | <input type="checkbox"/> |
| Additional HP Drive, Air only | MC1HPDR | \$277.00 | <input type="checkbox"/> |
| Assistant's Vacuum Package 1 HVE, 1 SE, with Quad-Bar, 3 way syringe and block | MCHSVK3 | \$579.00 | <input type="checkbox"/> |
| Self Contained (Wall Mounted) Clean Water System | MCSCWM1 | \$319.00 | <input type="checkbox"/> |
| 3 Port USB Docking Station with Power Supply | MP16N | \$220.00 | <input type="checkbox"/> |
| GFI Duplex Outlet with BX Wire & Box | MP13GFIKT | \$254.00 | <input type="checkbox"/> |
| Medical Grade Power Bar | MP13MG | \$281.00 | <input type="checkbox"/> |
| 3/8" Female Air Quick Disconnect 1/4" Female Water Quick Disconnect | FAQD38 | \$233.00 | <input type="checkbox"/> |
| Sharps Container 1.5Qt | MBIS | \$206.00 | <input type="checkbox"/> |
| LED Task Lighting - 24" | MPTL24LH | \$225.00 | <input type="checkbox"/> |

OPTION REFERENCE GUIDE

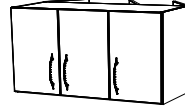
Upper Module (1)



MDU426
42" Upper with 6 Shelves
\$1,075.00

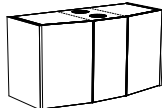


MDU42CPU
42" Upper with CPU in center/2 vents
\$1,153.00

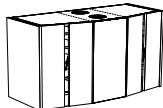


MDU42PT
42" Upper with Pass Thru & Finished Back
\$1,712.00

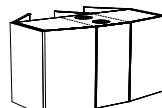
Upper Module (1)



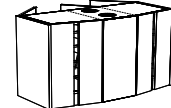
TLU42
Solid Door with Vented
CPU Storage
\$2,673.00



TLUG42
2 Door Glass Insert with Vented
CPU Storage
\$2,876.00

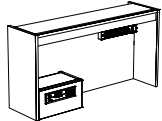


TLUP42
Solid Door Pass Thru and Finished
Back with Vented CPU Storage
\$3,090.00

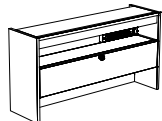


TLUPG42
4 Door Glass Pass Thru and
Finished Back with Vented
CPU Storage
\$3,721.00

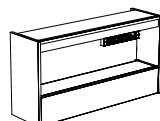
Mid-Section Module (2)



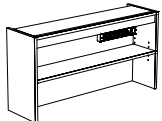
MDMPM
Mid-Section with Panel Mount Housing
\$1,024.00



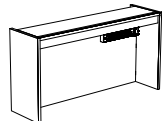
MDMFFD
Mid-Section with Full Flip Down
\$1,191.00



MDMUP
Mid-Section with Full Utility Panel
\$1,120.00

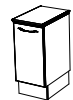


MDMWS
Mid-Section with Shelf
\$1,011.00



MDMWC
Mid-Section with Wire Chase
\$901.00

Base Module (3 & 5) (Left or Right)



MDLSC14
Single Cupboard
Promo Colors- \$757.00
Solid Surface - \$986.00



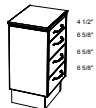
MDLDC14
1 Drawer with Cupboard
Promo Colors- \$855.00
Solid Surface - \$1,082.00



MDL4D14
4 Drawers
Promo Colors- \$1,012.00
Solid Surface - \$1,238.00



MDL4DE14
4 Drawer with Equipment
Promo Colors- \$1,076.00
Solid Surface - \$1,304.00



MDL4D15
4 Drawers
Promo Colors- \$1,012.00
Solid Surface - \$1,255.00



MDLPD15
Pocket Door with 2 Swing Out Trays
Promo Colors- \$1,209.00
Solid Surface - \$1,450.00



MDLS015
2 Drawers with Slide Out Tray
Promo Colors- \$1,153.00
Solid Surface - \$1,394.00

TAILORED COLLECTION - REAR CABINETRY

OPTION REFERENCE GUIDE

Monitor Mounts



MCGX270
Pivoting Monitor Mount
\$352.00



MCCPN502
Sliding Monitor Mount
\$894.00



MCCPN503K
Sliding Monitor Mount
with Mini Keyboard Tray
\$1,074.00

Clean Water System



MCSCWM1
Self Contained (Wall Mounted)
Clean Water System
\$319.00

Media Options



MP16N
3 Port USB Docking Station
with Power Supply
\$220.00

Doctor's Controls

MC2184BS
Under Surface 3HP Automatic
Control with Vacuum Package
and Clean Water, 2 HVE, 1 SE,
\$3,696.00



MCRVK1 Routing Valve Kit with
Water Shutoff & Regulator \$303.00

Additional Options for Panel Mount Control

| | | |
|-----------|-----------------------------------|------------|
| MC1HPFO | Fiber Optic for 1 HP | \$850.00 |
| MC1HPFO-6 | 6-Pin Fiber Optic for 1 HP | \$1,126.00 |
| MC2HPFO | Fiber Optic for 2 HP | \$1,229.00 |
| MC2HPFO-6 | 6-Pin Fiber Optic System for 2 HP | \$1,229.00 |
| MC1HPDR | Additional HP Drive, Air only | \$277.00 |
| MC1HPWE | Additional HP, Wet | \$576.00 |

Automatic "Mini" 3HP Unit Control

MCT600PK

- 3-way air/water syringe • Routing valve kit
 - Individual HP pressure adjustment
 - Individual water coolant adjustment
 - Sterling 4-hole Midwest-type HP tubing
 - Air/Water shut off, valves and regulator
 - Swivel, slide-mount, under cabinet mount
 - Self contained (wall mount) clean water with gauge
 - 1.5 litre bottle includes shroud and mini regulator
- \$3,256.00



Options for Automatic "Mini" 3HP Unit Control

| | | |
|-----------|--|------------|
| MC1HPFO | Fiber-optic system for 1 handpiece | \$850.00 |
| MC1HPFO-6 | 6 pin Fiber-optic system for 1 handpiece | \$1,126.00 |
| MC2HPFO | Fiber-optic system for 2 handpieces with tubing, and lamps | \$1,229.00 |
| MC2HPFO-6 | 6 pin Fiber-optic system for 2 handpieces with tubing and lamps | \$1,229.00 |
| MCAS812 | Add folding arm assembly (8" & 12") with wall mount less swivel slide mount | \$73.00 |
| MCUTILH | Utility housing & cover only | \$180.00 |

Assistant's Packages



MCHSVK3
Assistant's Vacuum Package
2 HVE, 1 SE, with Quad-Bar,
3 way syringe and block
\$579.00



MCUTILV
Vacuum Utilities
Option, Air and
Water Regulator
with Shutoffs
\$411.00



MC1284
Assistant's Central Vacuum Under
Surface Package with Rotating
Mount, 2 HVE, 1 SE, Clean Water
& Air Only Shutoff & Regulator
\$2,106.00

MCRVK1 Routing Valve Kit with Water Shutoff & Regulator \$303.00

Misc Options



MPTL24LH
Task Light 24" LED
\$225.00



MBIIS
Sharps Container
1.5Qt
\$206.00



MP13GFIKT
GFI Duplex
Outlet with
BX Wire & Box
\$254.00



MP1775
Tapmaster Hands
Free Water
Activation System
\$643.00



FAQD38
3/8" Female Air
Quick Disconnect
1/4" Female Water
Quick Disconnect
\$233.00



MCIHVE
Additional Universal
Autoclavable HVE
Position with Tubing
\$104.00



MP13MG
Medical Grade
Power Bar
\$281.00

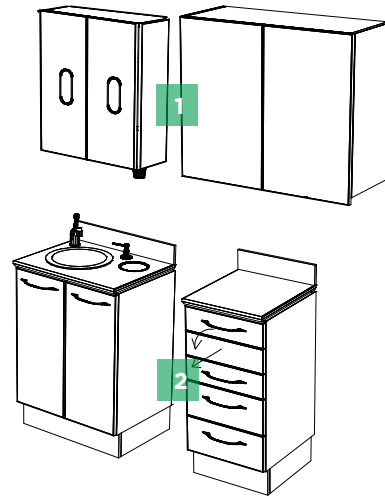


For more information, contact MCC at 1-800-388-6236 or visit www.mccdental.com

SIDE CABINETRY

KEY FEATURES

- Optional solid surface or Quartz countertop
- PVC edging
- MCC's new modern design
- Upper cabinets can be integrated into layout
- Unlimited configuration options
- Soft-close drawers and doors



OPTIONS

| Upper Module (1) - Optional | Part Number | | | Retail | Select |
|--|-------------|--------------|---------------|------------|--------------------------|
| Double Doors with Glove, Cup & Towel Dispenser with 1 Adjustable Shelf | U24GCT | | | \$971.00 | <input type="checkbox"/> |
| Single Door Upper with 2 Adjustable Shelves - 16" wide | U16X26 | | | \$448.00 | <input type="checkbox"/> |
| Double Door Upper with 2 Adjustable Shelves - 24" wide | U24X26 | | | \$630.00 | <input type="checkbox"/> |
| Double Door Upper with 2 Adjustable Shelves - 32" wide | U32X26 | | | \$714.00 | <input type="checkbox"/> |
| Base Module (2) | Part Number | Promo Colors | Solid Surface | Retail | Select |
| Double Door Storage Base - 24" wide | B24DDPL | • | | \$971.00 | <input type="checkbox"/> |
| Double Door Storage Base - 24" wide | B24DDPCC | | • | \$1,358.00 | <input type="checkbox"/> |
| Double Door Storage Base with Sink & Waste Drop - 24" wide | B24DDSL | • | | \$1,841.00 | <input type="checkbox"/> |
| Double Door Storage Base with Sink & Waste Drop - 24" wide | B24DDSCC | | • | \$2,410.00 | <input type="checkbox"/> |
| Knee Space Base - 16" wide | B16CRNL | • | | \$406.00 | <input type="checkbox"/> |
| Knee Space Base - 16" wide | B16CRNCC | | • | \$664.00 | <input type="checkbox"/> |
| Single Door Base - 16" wide | B16SDPL | • | | \$757.00 | <input type="checkbox"/> |
| Single Door Base - 16" wide | B16SDPCC | | • | \$1,016.00 | <input type="checkbox"/> |
| Single Door / 1 Drawer - 16" wide | B161DSL | • | | \$836.00 | <input type="checkbox"/> |
| Single Door / 1 Drawer - 16" wide | B161DSCC | | • | \$1,094.00 | <input type="checkbox"/> |
| 4 Drawer Base - 16" wide | B164DWL | • | | \$1,012.00 | <input type="checkbox"/> |
| 4 Drawer Base - 16" wide | B164DWCC | | • | \$1,271.00 | <input type="checkbox"/> |
| 4 Drawer W/Equipment - 16" wide | B164DEL | • | | \$1,076.00 | <input type="checkbox"/> |
| 4 Drawer W/Equipment - 16" wide | B164DECC | | • | \$1,335.00 | <input type="checkbox"/> |
| Knee Space or Deliver - 32" wide | B32KNEEL | • | | \$747.00 | <input type="checkbox"/> |
| Knee Space or Deliver - 32" wide | B32KNEECC | | • | \$1,264.00 | <input type="checkbox"/> |
| Optional Accessories | Part Number | | | Retail | Select |
| Counter Waste With Pail for single/double storage base | CWWP01 | | | \$225.00 | <input type="checkbox"/> |
| 3" Round End Panel | RDEP | • | • | \$353.00 | <input type="checkbox"/> |
| Sharps Container 1.5 Quarts | MBIIS | | | \$206.00 | <input type="checkbox"/> |
| Tapmaster Faucet Control | MP1775 | | | \$643.00 | <input type="checkbox"/> |
| CPU Vent (each) | P0018 | | | \$45.00 | <input type="checkbox"/> |
| Glove Dispenser (2pc) | GD01 | | | \$293.00 | <input type="checkbox"/> |

TAILORED COLLECTION - SIDE CABINETRY

OPTION REFERENCE GUIDE

Upper Module (1)



U24GCT
Double Doors with Glove,
Cup & Towel Dispenser with 1
Adjustable Shelf
\$971.00



U16X26
Single Door Upper
with 2 Adjustable Shelves
\$448.00

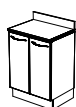


U24X26
Double Door Upper
with 2 Adjustable Shelves
\$630.00



U32X26
Double Door Upper
with 2 Adjustable Shelves
\$714.00

Base Module (2)



B24DDP
Double Door Storage Base
Promo Colors- \$971.00
Solid Surface - \$1,358.00



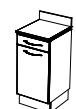
B24DDS
Double Door Storage Base
with Sink & Waste Drop
Promo Colors- \$1,841.00
Solid Surface - \$2,410.00



B16CRN
Knee Space Base
Promo Colors- \$406.00
Solid Surface - \$664.00



B16SDP
Single Door Base
Promo Colors- \$757.00
Solid Surface - \$1,016.00



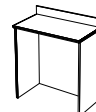
B16IDS
Single Door / 1 Drawer
Promo Colors- \$836.00
Solid Surface - \$1,094.00



B164DW
4 Drawer Base
Promo Colors- \$1,012.00
Solid Surface - \$1,271.00



B164DE
4 Drawer W/Equipment
Promo Colors- \$1,076.00
Solid Surface - \$1,335.00

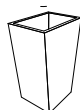


B32KNEE
Knee Space or Deliver
Promo Colors- \$747.00
Solid Surface - \$1,264.00



RDEP
3" Round End Panel
\$353.00

Misc Options



CWWP01
Counter Waste With Pail.
Add to single or double
door storage base.
\$225.00



P0018
CPU Vent
\$45.00 (each)



GD01
Glove Dispenser
\$293.00 (2 pc)



MBIIS
Sharps Container
1.5Qt
\$206.00



MP1775
Tapmaster Hands Free
Water Activation System
\$643.00

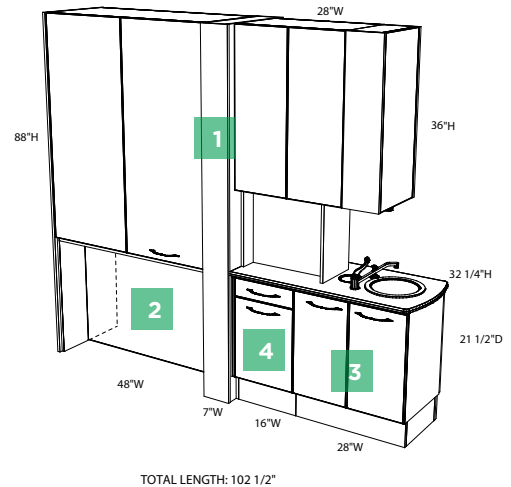


MP3M
Soap Dispenser
\$138.00

CENTER ISLAND

KEY FEATURES

- Optional solid surface or Quartz countertop
- PVC edging
- MCC's new modern, space saving design
- Unlimited configuration options
- Under mounted stainless steel sink with Solid Surface only
- Hardware and plumbing fixtures included
- Soft-close drawers and doors



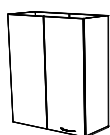
OPTIONS

| Upper Module (1) | Part Number | | Retail | Select | |
|--|--------------|--------------|---------------|--------------------------|--------------------------|
| 48" Bi-Fold Doors (Pass Thru X-Ray Storage) | MSCI48PTS | | \$2,446.00 | <input type="checkbox"/> | |
| 48" Bi-Fold Doors (Pass Thru X-Ray Storage) Lead Lined | MSCI48PTSLL | | \$1,638.00 | <input type="checkbox"/> | |
| Lead Lined for Complete Unit | MSCICLL | | \$3,718.00 | <input type="checkbox"/> | |
| 48" Pass Thru Storage with 6 Shelves Double Door Storage | MSCI48PDD | | \$2,632.00 | <input type="checkbox"/> | |
| 28" W Pass Thru Storage with Privacy Panel | MSCI28PTP | | \$1,122.00 | <input type="checkbox"/> | |
| Cup and Towel with 2 Shelves | MSCICT02S | | \$657.00 | <input type="checkbox"/> | |
| Lower Module (Toe End) (2) | Part Number | | Retail | Select | |
| 48" Knee Space Divided in the Center | MSCI48KDC | | \$3,025.00 | <input type="checkbox"/> | |
| 48" Side Delivery with 12" W Storage on Side A or B | MSCI48SCS | | \$3,785.00 | <input type="checkbox"/> | |
| 48" Storage Pass Thru | MSCI48SPT | | \$3,920.00 | <input type="checkbox"/> | |
| 48" 2 Drawer/Storage Alternating Sides | MSCI482DS | | \$4,306.00 | <input type="checkbox"/> | |
| 48" 4 Drawer Alternating on Both Sides | MSCI484DS | | \$4,422.00 | <input type="checkbox"/> | |
| Lower Module (Sink End) (3) | Part Number | Promo Colors | Solid Surface | Retail | Select |
| 28" W Sink with Waste - Promo Colors | MSCI28SWWL | • | | \$2,035.00 | <input type="checkbox"/> |
| 28" W Sink with Waste - Solid Surface | MSCI28SWWCC | | • | \$2,486.00 | <input type="checkbox"/> |
| 28" W Sink with Round End and Waste - Promo Colors | MSCI28SRWWL | • | | \$2,319.00 | <input type="checkbox"/> |
| 28" W Sink with Round End and Waste - Solid Surface | MSCI28SRWWCC | | • | \$2,756.00 | <input type="checkbox"/> |
| Lower Module (4) | Part Number | Promo Colors | Solid Surface | Retail | Select |
| 16" W 1 Drawer with Pass Thru - Promo Colors | MSCIB161DL | • | | \$985.00 | <input type="checkbox"/> |
| 16" W 1 Drawer with Pass Thru - Solid Surface | MSCIB161DCC | | • | \$1,313.00 | <input type="checkbox"/> |
| 16" W 2 Drawers on Each Side - Promo Colors | MSCIB162DL | • | | \$1,114.00 | <input type="checkbox"/> |
| 16" W 2 Drawers on Each Side - Solid Surface | MSCIB162DCC | | • | \$1,373.00 | <input type="checkbox"/> |
| 16" W Writing Surface Equipment Drawer & Regular Drawer | MSCIB16WSL | • | | \$1,128.00 | <input type="checkbox"/> |
| 16" W Writing Surface Equipment Drawer & Regular Drawer | MSCIB16WSCC | | • | \$1,387.00 | <input type="checkbox"/> |
| Optional Accessories | Part Number | | | Retail | Select |
| Tapmaster Faucet Control | MP1775 | | | \$643.00 | <input type="checkbox"/> |
| Sharps Container 1.5 Quarts | MB11S | | | \$206.00 | <input type="checkbox"/> |
| Glove Dispenser (2 pc) | GD01 | | | \$293.00 | <input type="checkbox"/> |
| CPU Vent (Each) | P0018 | | | \$45.00 | <input type="checkbox"/> |
| GFI Duplex Outlet with Box Wire & Box | MP13GFIKT | | | \$254.00 | <input type="checkbox"/> |
| Pivoting Monitor Mount | MCGX270 | | | \$352.00 | <input type="checkbox"/> |
| 3 Port USB Docking Station with Power Supply | MP16N | | | \$220.00 | <input type="checkbox"/> |

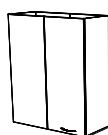
TAILORED COLLECTION - CENTER ISLAND

OPTION REFERENCE GUIDE

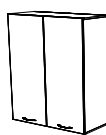
Upper Module (1)



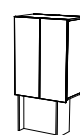
MSC148PTS
48" Bi-Fold (Pass Thru
X-Ray Storage)
\$2,446.00



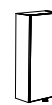
MSC148PTSL
48" Bi-Fold Doors (Pass Thru
X-Ray Storage) Lead Lined
\$1,638.00



MSC148PDD
48" Pass Thru Storage with 6
Shelves Double Door Storage
\$2,632.00

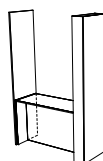


MSC128PTP
28" W Pass Thru Storage
with Privacy Panel
\$1,122.00

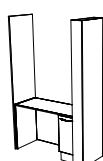


MSC1C202S
Cup and Towel
with 2 Shelves
\$657.00

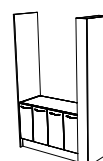
Lower Module (Toe End) (2)



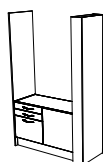
MSC148KDC
48" Knee Space Divided
in the Center
\$3,025.00



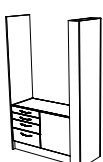
MSC148SCS
48" Side Delivery with 12" W
Storage on Side A or B
\$3,785.00



MSC148SPT
48" Storage Pass Thru
\$3,920.00



MSC1482DS
48" 2 Drawer/Storage
Alternating Sides
\$4,306.00

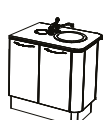


MSC1484DS
48" 4 Drawer
Alternating on Both Sides
\$4,422.00

Lower Module (Sink End) (3)



MSC128SWW
28" W Sink with Waste
Promo Colors - \$2,035.00
Solid Surface - \$2,486.00



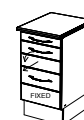
MSC128SRWW
28" W Sink with Round
End and Waste
Promo Colors - \$2,319.00
Solid Surface - \$2,756.00



MSC1B161D
16" W 1 Drawer with
Pass Thru
Promo Colors - \$985.00
Solid Surface - \$1,313.00



MSC1B162D
16" W 2 Drawers
on Each Side
Promo Colors - \$1,114.00
Solid Surface - \$1,373.00



MSC1B16WS
16" W Writing Surface Equipment
Drawer & Regular Drawer
1 Drawer on Side B
Promo Colors - \$1,128.00
Solid Surface - \$1,387.00

Misc Options



MCGX270
Pivoting Monitor
Mount
\$352.00



P0018
CPU Vent
\$45.00 (each)



GD01
Glove Dispenser
\$293.00 (2 pc)



MBIS
Sharps Container
1.5Qt
\$206.00



MP1775
Tapmaster Hands Free
Water Activation System
\$643.00



MP13GFIKT
GFI Duplex Outlet
with BX Wire & Box
\$254.00



MP16N
3 Port USB Docking Station
with Power Supply
\$220.00

TAILORED STERILIZATION CENTERS

STANDARD FEATURES

- Promo Colors or Solid Surface Counter top
- HDPE end panels
- Solid surface sterilizer pullout shelves
- Wide Range of colors for cabinet and counter top
- Seven (7) Year Warranty
- PVC edging
- Soft-close drawers and doors
- HDPE pullout autoclave shelves holds up to 200 lbs.

MCMS8 STERILIZATION CENTER PRICING

| Cabinet | Promo Colors | Solid Surface | Retail |
|----------|--------------|---------------|-------------|
| MCMS8 | • | | \$9,824.00 |
| MCMS8CRN | | • | \$11,708.00 |

MCMS10 STERILIZATION CENTER PRICING

| Cabinet | Promo Colors | Solid Surface | Retail |
|-----------|--------------|---------------|-------------|
| MCMS10 | • | | \$12,010.00 |
| MCMS10CRN | | • | \$14,507.00 |

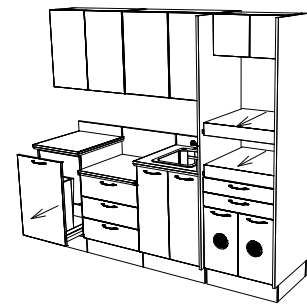
MCMS12 STERILIZATION CENTER PRICING

| Cabinet | Promo Colors | Solid Surface | Retail |
|-----------|--------------|---------------|-------------|
| MCMS12 | • | | \$14,752.00 |
| MCMS12CRN | | • | \$17,698.00 |

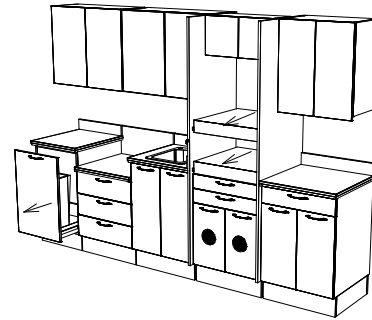
OPTIONS

| Optional Accessories | Part Number | Retail | Select |
|-----------------------------------|-------------|----------|--------------------------|
| 24" Task Light | MPTL24LH | \$225.00 | <input type="checkbox"/> |
| 45" Task Light | MPTL45H | \$269.00 | <input type="checkbox"/> |
| 3" light valance for MCMS8 | LUVI28 | \$198.00 | <input type="checkbox"/> |
| 3" light valance for MCMS10 | LUVI210 | \$264.00 | <input type="checkbox"/> |
| 3" light valance for MCMS12 | LUVI212 | \$330.00 | <input type="checkbox"/> |
| Under Counter Sharps | MPSCHM62 | \$450.00 | <input type="checkbox"/> |
| Steri Blue Light | MPSLBH | \$391.00 | <input type="checkbox"/> |
| Steri Red Light | MPSLRH | \$391.00 | <input type="checkbox"/> |
| Glass Inserts Upper | LUGI | \$191.00 | <input type="checkbox"/> |
| Tapmaster | MP1775 | \$643.00 | <input type="checkbox"/> |
| Glove Box Insert (2 pc) | GD01 | \$293.00 | <input type="checkbox"/> |
| Paper Towel Dispenser C Fold Type | MP12B | \$57.00 | <input type="checkbox"/> |
| Foot Activated Waste Drawer | MCKNSD1 | \$624.00 | <input type="checkbox"/> |

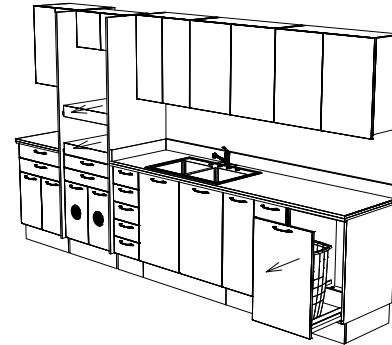
Reverse Configuration Available. Please specify



8 ft.



10 ft.

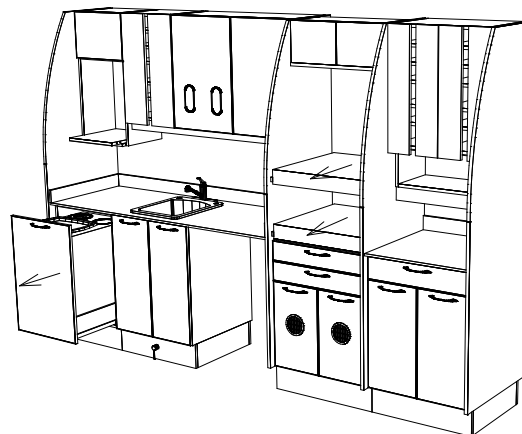


12 ft.

PFSC10 STERILIZATION CENTER

STANDARD FEATURES

- Solid surface counter included
- PVC edging
- Integrated waste module with waste drop, sharps and bio waste
- Built-in glove dispenser
- Under mounted stainless steel sink
- Hardware and plumbing fixtures included
- Hand piece lubricator module
- Automatic washer compatible
- Tapmaster hands free water activation
- Red/Blue (Dirty/Clean) indicators
- 3 separate areas for receiving/ preparation and clean
- 5" Brushed chrome handles
- Foot activated waste drawer
- Soft-close drawers and doors
- HDPE pullout autoclave shelves holds up to 200 lbs.



PFSC10 - 10' STERILIZATION CENTER PRICING

| Cabinet | Promo Colors | Solid Surface | Retail |
|----------|--------------|---------------|-------------|
| PFSC10C | | • | \$22,768.00 |
| PFSC10CL | • | | \$20,551.00 |

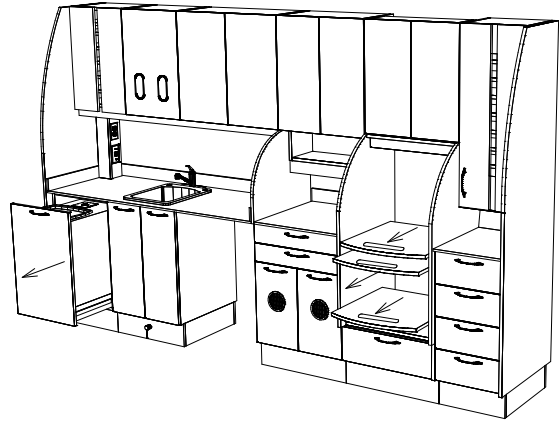
OPTIONS

| Optional Accessories | Part Number | Retail | Select |
|--|---------------|----------|--------------------------|
| High Volume Evacuator (HVE) Sink Side with Countertop Holder | MCHVE1 | \$164.00 | <input type="checkbox"/> |
| Tapmaster Hands Free Water Activation System | MP1775 | Included | <input type="checkbox"/> |
| Clean and Dirty (Blue/Red) Indicator Lights | MPSLBH/MPSLRH | Included | <input type="checkbox"/> |
| LED Task Lighting - 45" | MPTL45H | Included | <input type="checkbox"/> |
| Storage Cabinet in Lieu of Washer Opening | LS12425 | \$792.00 | <input type="checkbox"/> |
| <i>Reverse Configuration Available. Please specify</i> | | | <input type="checkbox"/> |

PFSC11 STERILIZATION CENTER

STANDARD FEATURES

- Solid surface counter included
- PVC edging
- Built-in glove dispenser
- Integrated waste module with waste drop, sharps and bio waste
- Under mounted stainless steel sink
- Hardware and plumbing fixtures included
- Automatic washer compatible
- Tapmaster hands free water activation
- Red/Blue (Dirty/Clean) indicators
- 4 separate areas for:
receiving and cleaning preparation and packaging
sterilization sterile clean storage
- 5" Brushed chrome handles
- Foot activated waste drawer
- Soft-close drawers and doors
- HDPE pullout autoclave shelves holds up to 200 lbs.



PFSC11 - 11' STERILIZATION CENTER PRICING

| Cabinet | Promo Colors | Solid Surface | Retail |
|---------|--------------|---------------|-------------|
| PFSC11 | | • | \$23,967.00 |
| PFSC11L | • | | \$21,971.00 |

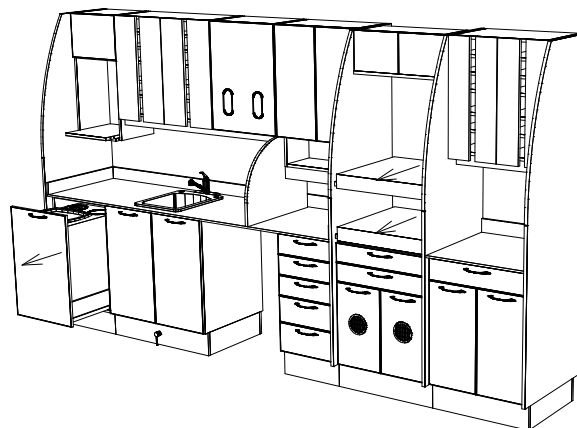
OPTIONS

| Optional Accessories | Part Number | Retail | Select |
|--|---------------|----------|--------------------------|
| High Volume Evacuator (HVE) Sink Side with Countertop Holder | MCHVE1 | \$164.00 | <input type="checkbox"/> |
| Tapmaster Hands Free Water Activation System | MP1775 | Included | <input type="checkbox"/> |
| Clean and Dirty (Blue/Red) Indicator Lights | MPSLBH/MPSLRH | Included | <input type="checkbox"/> |
| LED Task Lighting - 45" | MPTL45H | Included | <input type="checkbox"/> |
| Storage Cabinet in Lieu of Washer Opening | LS12425 | \$792.00 | <input type="checkbox"/> |
| <i>Reverse Configuration Available. Please specify</i> | | | <input type="checkbox"/> |

PFSC12 STERILIZATION CENTER

STANDARD FEATURES

- Solid surface counter included
- PVC edging
- Integrated waste module with waste drop, sharps and bio waste
- Built-in glove dispenser
- Under mounted stainless steel sink
- Hardware and plumbing fixtures included
- Hand piece lubricator module
- Automatic washer compatible
- Tapmaster hands free water activation
- Red/Blue (Dirty/Clean) indicators
- 3 separate areas for receiving/ preparation and clean
- 5" Brushed chrome handles
- Solid surface cladding around sterilizers
- Foot activated waste drawer
- Soft-close drawers and doors
- HDPE pullout autoclave shelves holds up to 200 lbs.



PFSC12 - 12' STERI CENTER PRICING

| Cabinet | Promo Colors | Solid Surface | Retail |
|----------|--------------|---------------|-------------|
| PFSC12C | | • | \$24,602.00 |
| PFSC12CL | • | | \$21,942.00 |

OPTIONS

| Optional Accessories | Part Number | Retail | Select |
|--|---------------|----------|--------------------------|
| High Volume Evacuator (HVE) Sink Side with Countertop Holder | MCHVE1 | \$164.00 | <input type="checkbox"/> |
| Tapmaster Hands Free Water Activation System | MP1775 | Included | <input type="checkbox"/> |
| Clean and Dirty (Blue/Red) Indicator Lights | MPSLBH/MPSLRH | Included | <input type="checkbox"/> |
| LED Task Lighting - 45" | MPTL45H | Included | <input type="checkbox"/> |
| Storage Cabinet in Lieu of Washer Opening | LS12425 | \$792.00 | <input type="checkbox"/> |
| <i>Reverse Configuration Available. Please specify</i> | | | <input type="checkbox"/> |

ORTHO MOBILES

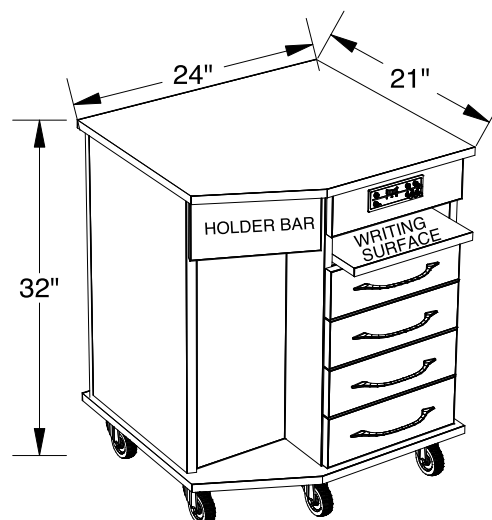


ORTHO MOBILES COLLECTION - MFO2421 (24"X21")

MFO2421 (24" x 21")

STANDARD FEATURES

- Slide out shelf for mini keyboard or writing shelf
- Soft close full extension drawers
- 2 handpiece automatic control with air/water syringe MCT520PM
- MCVK1PK Asst. Vacuum Kit (1 SE, 1 HVE and holders)
- Self contained clean water system with wall mount and gauge (1.5litre bottle)
- Complete Utility center with housing and cover and routing valve kit
- Rear access door
- Sturdy rubber casters
- See control options for MCT520PM on page 51



MFO2421 CENTER PRICING / OPTIONS

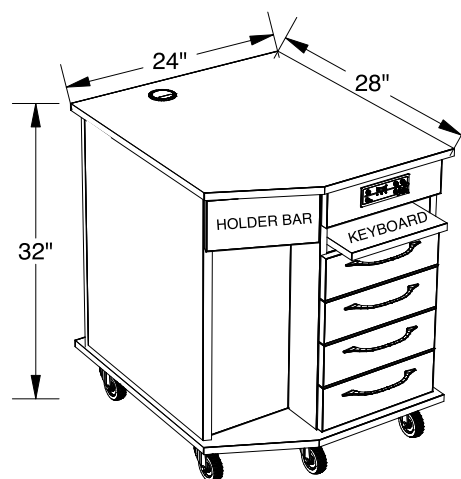
| Cabinet | Promo Colors | Solid Surface | Retail |
|----------------------------------|--------------|---------------|------------|
| MFO2421 | • | | \$4,977.00 |
| MFO2421CRN | | • | \$5,325.00 |
| MFBB5 Fixed Base (5" high) | | | \$247.00 |
| MCLTU51 Laptop Mount | | | \$405.00 |
| MP13MG Medical Grade Power Strip | | | \$281.00 |

ORTHO MOBILES COLLECTION - MFO2428C (24"X28")

MFO2428C (24" x 28")

STANDARD FEATURES

- Slide out shelf for mini keyboard or writing shelf
- Soft close full extension drawers
- 2 handpiece automatic control with air/water syringe MCT520PM
- MCVK1PK Asst. Vacuum Kit (1 SE, 1 HVE and holders)
- Self contained clean water system with wall mount and gauge (1.5litre bottle)
- Complete Utility center with housing and cover and routing valve kit
- Dedicated computer storage with ventilation and medical grade power strip
- Rear access door
- Sturdy rubber casters
- See control options for MCT520PM on page 51



MFO2428C CENTER PRICING / OPTIONS

| Cabinet | Promo Colors | Solid Surface | Retail |
|--|--------------|---------------|------------|
| MFO2428C | • | | \$5,365.00 |
| MFO2428CCRN | | • | \$5,800.00 |
| MFBB5 Fixed Base (5" high) | | | \$247.00 |
| MCLTU51 Laptop Mount | | | \$405.00 |
| MCUL5007 Monitor Mount | | | \$363.00 |
| MCULD7K1Z Monitor Mount with 12" Keyboard Tray | | | \$934.00 |



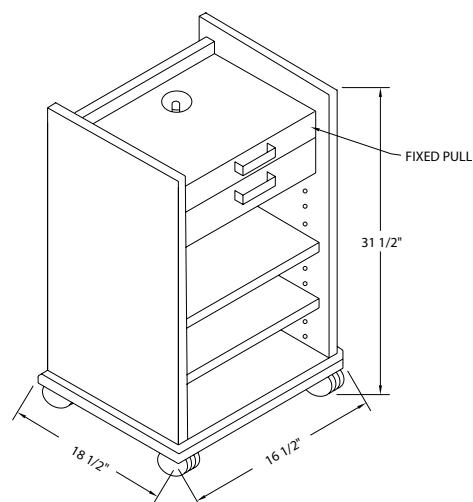
MOBILE CARTS



MOBILES COLLECTION - PROMOTIONAL

MC553SP • UTILITY MOBILE**STANDARD FEATURES**

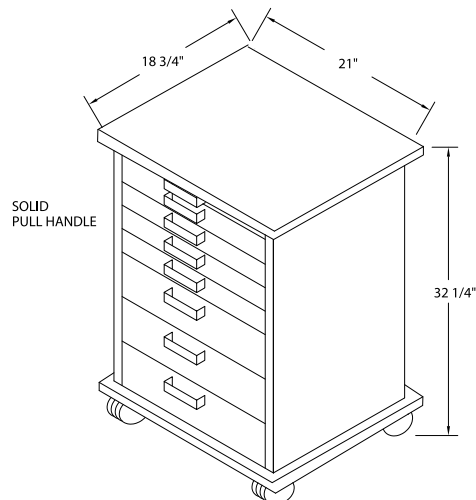
- One (1) instrument drawer
- Two (2) adjustable shelves
- Rear notched shelves for electrical cord exit
- Accommodates a variety of dental equipment
- PVC edging
- 16.5" wide, 18.5" deep, 31.5" high
- Shelf width 14.5" I.D.
- Three standard colors only:
Folkstone, Surf & Snow White

**MC553SP PRICING / OPTIONS**

| Cabinet | Laminate Colors | Retail |
|---------|-----------------|----------|
| MC553SP | • | \$276.00 |

MFB210SP • DOCTOR'S MOBILE**STANDARD FEATURES**

- Four (4) instrument drawers
- Three (3) storage drawers
- PVC edging
- 21" wide, 18.75" deep, 32.25" high
- Three standard colors only:
Folkstone, Surf & Snow White

**MFB210SP PRICING / OPTIONS**

| Cabinet | Laminate Colors | Retail |
|----------|-----------------|----------|
| MFB210SP | • | \$669.00 |

MFB217 • ALABAMA MOBILE**STANDARD FEATURES**

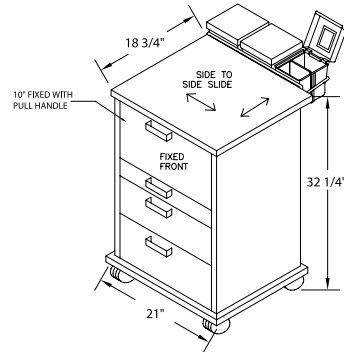
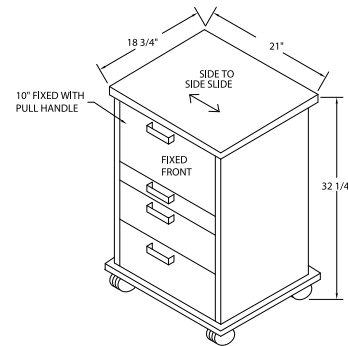
- One (1) instrument drawer
- Two (2) storage drawers
- Sliding countertop (side-side or front-back)
- Fixed amalgamator well; power bar
- PVC edging
- 21" wide, 18.75" deep, 32.25" high
- Three standard colors only:
Folkstone, Surf & Snow White

MFB217 PRICING / OPTIONS

| Cabinet | Top Direction | Retail |
|----------|---------------|----------|
| MFB217SS | Side to Side | \$613.00 |
| MFB217FB | Front to Back | \$613.00 |

Same features as MB217SS above, includes MB20 storage organizer.

| Cabinet | Top Direction | Retail |
|------------|-------------------|----------|
| MFB217SSPK | Side to Side Only | \$832.00 |

**MFB218 • NORTH CAROLINA MOBILE****STANDARD FEATURES**

- Three (3) instrument drawers
- One (1) storage drawer
- Pull-out amalgamator drawer with drop leaf door
- Sliding side shelf (specify right side or left side)
- PVC edging
- 21" wide, 18.75" deep, 32.25" high
- Three standard colors only:
Folkstone, Surf & Snow White

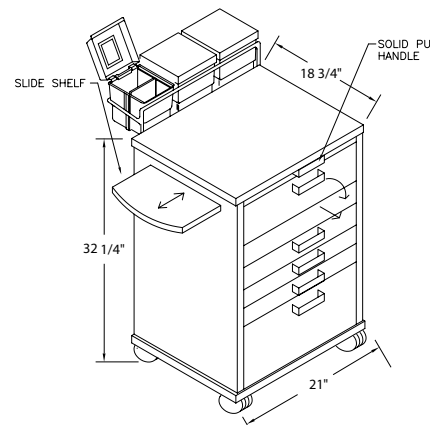
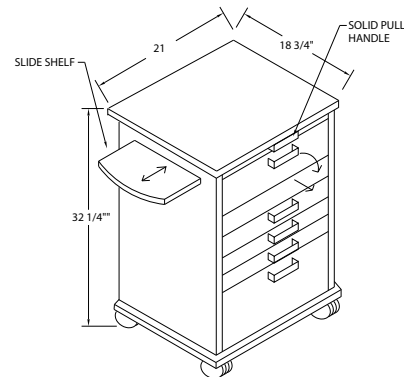
MFB218 PRICING / OPTIONS

| Cabinet | Top Direction | Retail |
|----------|----------------|----------|
| MFB218LT | Left Pull Out | \$710.00 |
| MFB218RT | Right Pull Out | \$710.00 |

Same features as above, includes MB20 storage organizer.

| Cabinet | Top Direction | Retail |
|------------|--------------------------|----------|
| MFB218PKLT | Left Pull Out with MB20 | \$838.00 |
| MFB218PKRT | Right Pull Out with MB20 | \$838.00 |

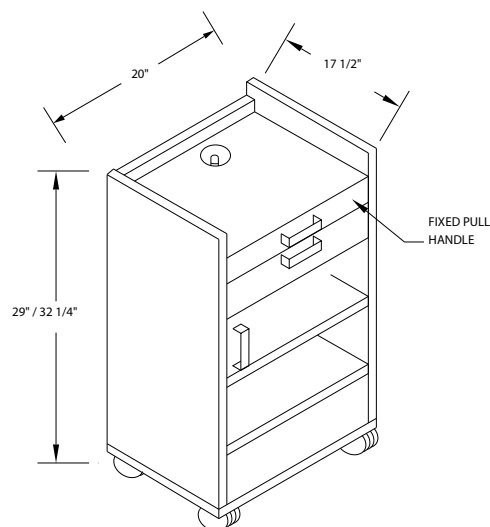
| Option | Top Direction | Retail |
|--------|---------------|----------|
| MPBLK1 | Gang-lock | \$342.00 |



MOBILES COLLECTION - 1000 SERIES

MC5054 • UTILITY MOBILE**STANDARD FEATURES**

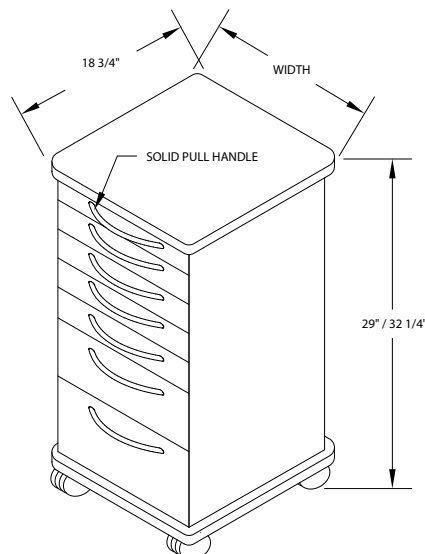
- One (1) instrument drawer
- Two (2) adjustable shelves behind door
- Rear notched shelves for electrical cord exit
- Accommodates a variety of dental equipment
- PVC edging
- 20" wide, 17.5" deep, 29" or 32.25" high (please specify)
- Available in all MCC Standard laminate colors

**MC5054 PRICING / OPTIONS**

| Cabinet | Laminate | Retail |
|---------|----------|----------|
| MC5054 | • | \$682.00 |

DOCTOR'S MOBILE**STANDARD FEATURES**

- Four (4) instrument drawers
- Three (3) storage drawers
- PVC edging
- Please specify 29" or 32.25" height
- For Vacuum Pkg options refer to page 51
- Available in all MCC Standard laminate colors

**PRICING / OPTIONS - LAMINATE**

| Cabinet | Width | Depth | Height | Retail |
|---------|-------|--------|------------|------------|
| MFA1006 | 17.5" | 18.75" | 29"/32.25" | \$1,371.00 |
| MFB2006 | 21.5" | 18.75" | 29"/32.25" | \$1,568.00 |
| MFC3006 | 25.5" | 18.75" | 29"/32.25" | \$1,625.00 |

PRICING / OPTIONS - SOLID SURFACE

| Cabinet | Width | Depth | Height | Retail |
|------------|-------|--------|------------|------------|
| MFA1006CRN | 17.5" | 18.75" | 29"/32.25" | \$1,813.00 |
| MFB2006CRN | 21.5" | 18.75" | 29"/32.25" | \$1,959.00 |
| MFC3006CRN | 25.5" | 18.75" | 29"/32.25" | \$2,081.00 |

ALABAMA MOBILE**STANDARD FEATURES**

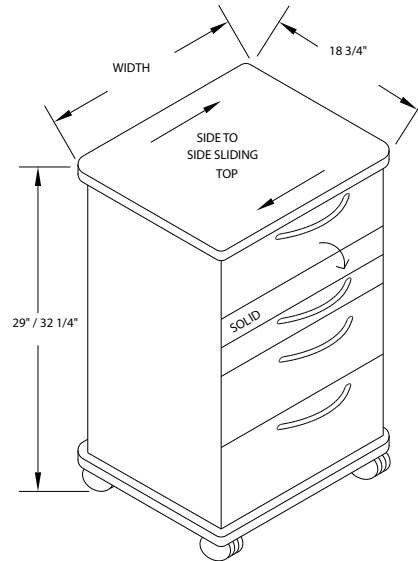
- One (1) instrument drawer
- Two (2) storage drawers
- Sliding countertop (specify side-side or front-back)
- Fixed amalgamator well; power bar: flip down front
- PVC edging
- Please specify 29" or 32.25" height
- For Vacuum Pkg options refer to page 51
- Available in all MCC Standard laminate colors

PRICING - LAMINATE COLORS

| Cabinet | Width | Depth | Height | Retail |
|-------------------------|-------|--------|------------|------------|
| MFA1017 | 17.5" | 18.75" | 29"/32.25" | \$1,354.00 |
| MFB2017 | 21.5" | 18.75" | 29"/32.25" | \$1,516.00 |
| MFB2017FF (Fixed Front) | 21.5" | 18.75" | 29"/32.25" | \$1,243.00 |
| MFC3017 | 25.5" | 18.75" | 29"/32.25" | \$1,568.00 |

PRICING - SOLID SURFACE

| Cabinet | Width | Depth | Height | Retail |
|----------------------------|-------|--------|------------|------------|
| MFA1017CRN | 17.5" | 18.75" | 29"/32.25" | \$1,795.00 |
| MFB2017CRN | 21.5" | 18.75" | 29"/32.25" | \$1,907.00 |
| MFB2017FFCRN (Fixed Front) | 21.5" | 18.75" | 29"/32.25" | \$1,635.00 |
| MFC3017CRN | 25.5" | 18.75" | 29"/32.25" | \$2,023.00 |

**NORTH CAROLINA MOBILE****STANDARD FEATURES**

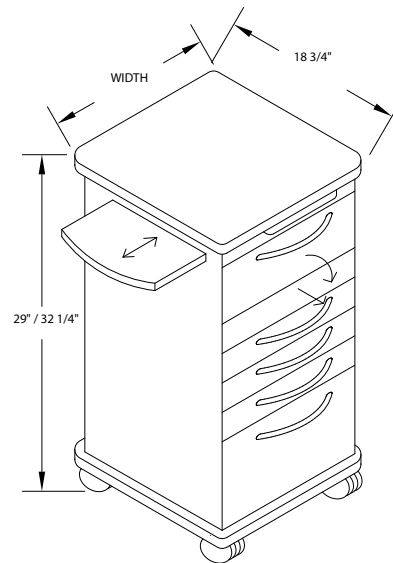
- Three (3) instrument drawers
- One (1) storage drawer
- Pull-out amalgamator drawer with drop leaf door
- Sliding side shelf (specify right side or left side)
- PVC edging
- Please specify 29" or 32" height
- For Vacuum Pkg options refer to page 51
- Available in all MCC Standard laminate colors

PRICING - LAMINATE COLORS

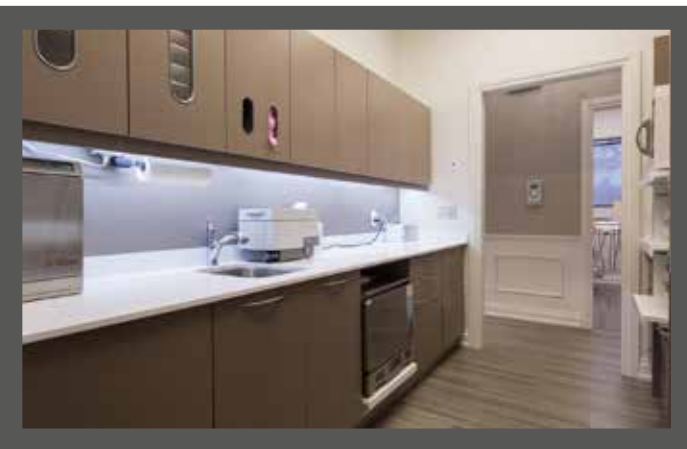
| Cabinet | Width | Depth | Height | Retail |
|---------|-------|--------|------------|------------|
| MFA1018 | 17.5" | 18.75" | 29"/32.25" | \$1,354.00 |
| MFB2018 | 21.5" | 18.75" | 29"/32.25" | \$1,516.00 |
| MFC3018 | 25.5" | 18.75" | 29"/32.25" | \$1,567.00 |

PRICING - SOLID SURFACE

| Cabinet | Width | Depth | Height | Retail |
|------------|-------|--------|------------|------------|
| MFA1018CRN | 17.5" | 18.75" | 29"/32.25" | \$1,795.00 |
| MFB2018CRN | 21.5" | 18.75" | 29"/32.25" | \$1,907.00 |
| MFC3018CRN | 25.5" | 18.75" | 29"/32.25" | \$2,023.00 |



TAILORED SOLUTIONS FOR YOUR DENTAL PRACTICE



PEDIATRIC BENCHES

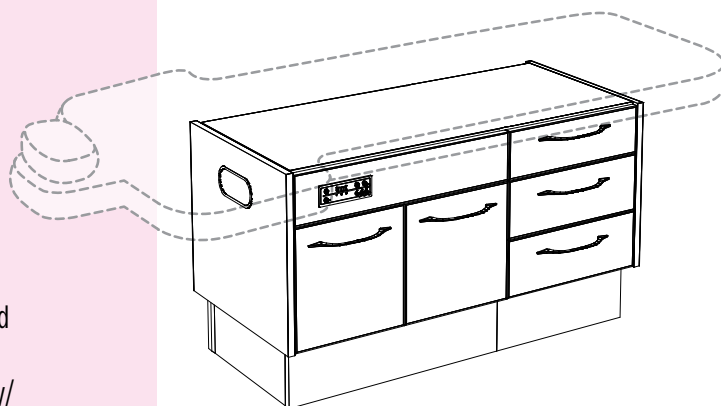


PEDIATRIC BENCH COLLECTION

PB2000

KEY FEATURES

- Designed specifically for the Pediatric Dental Practice
- Available in other configurations of drawers and storage modules to integrate with most Pediatric office concepts
- Optional Doctor/Assistant Controls
- Multiple color selections for Laminate Colors and Upholstery choices.
<https://mccdental.com/pedo-bench-upholstery/>
- Soft-close drawers and doors

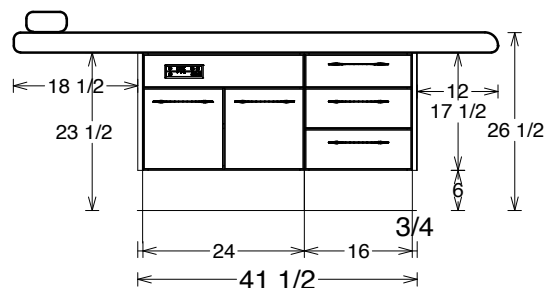
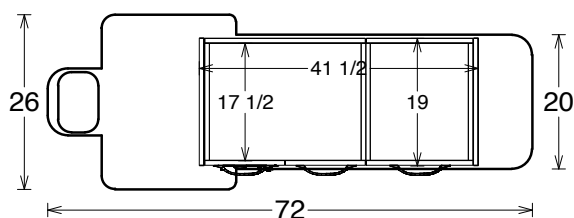


PB2000 PEDIATRIC BENCH PRICING

| Cabinet | Retail |
|---|------------|
| PB2000 – With Spirit Millenium upholstery | \$3,571.00 |
| PB2000NS – With Nauga Soft upholstery | \$3,773.00 |
| PB2000UL – With Ultraleather upholstery | \$4,470.00 |

OPTIONS

| Control/Vacuum | Part Number | Retail | Select |
|---|-------------|------------|--------------------------|
| 2HP Automatic Control with AW Syringe, Dual Folding Arms, Vacuum (1HVE, 1SE) and AW Syringe, Wall Mount Clean Water, air only regulator | MC2200P | \$3,143.00 | <input type="checkbox"/> |
| Fibre-Optic System for One Handpiece | MC1HPF0 | \$850.00 | <input type="checkbox"/> |
| 6 Pin Fibre-Optic System for One Handpiece | MC1HPF06 | \$850.00 | <input type="checkbox"/> |
| Assistant's only package with AW Syringe (1 HVE SE) | MCPDVK2 | \$934.00 | <input type="checkbox"/> |
| Clean Water | MCSCWM1 | \$319.00 | <input type="checkbox"/> |
| Vacuum Utilities | MCUTILV | \$411.00 | <input type="checkbox"/> |
| Additional Universal Autoclavable HVE position with tubing | MC1HVE | \$104.00 | <input type="checkbox"/> |
| Routing Valve Kit with Water Shutoff & Regulator | MCRVK1 | \$303.00 | <input type="checkbox"/> |



SANITIZING STATION



* Note: This product does not protect users or others from disease-causing bacteria. Always clean this product thoroughly after use.

SANITIZING STATION

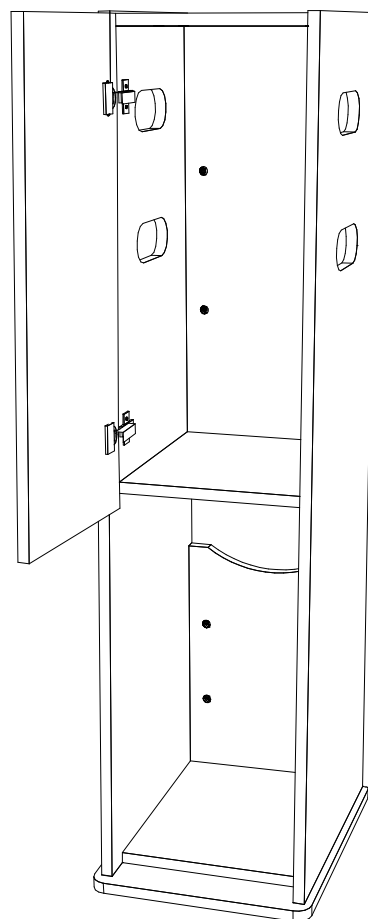
SANITIZING STATION
TOWER

KEY FEATURES

- Meets CDC & IPAC standards for reception/waiting rooms
- Holds standard size tissue, gloves and masks
- Includes bungee-cord box holders
- Includes touch-free hand sanitizer dispensers with drip tray
- Lockable Storage space for easy access to supplies
- Spacious area for easy restocking
- Includes large garbage container
- HDPE inhibits 99 % of bacteria, algae & fungi
- Compact and sleek designs measures 57" H x 15" W x 19" D
- Wood laminate construction is also available

SANITIZING STATION TOWER PRICING

| Part number | Description | Retail |
|-------------|--|------------|
| SSTHDPE | Sanitizing Station Tower HDPE | \$1,600.00 |
| SSTWL | Sanitizing Station Tower Wood Laminate | \$850.00 |



HDPE Tower

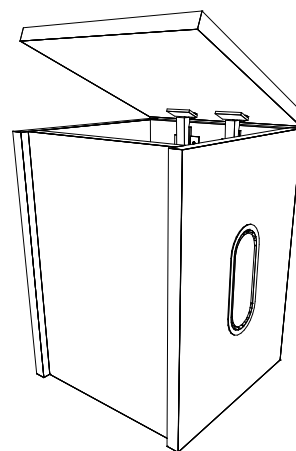
SANITIZING STATION
WALL MOUNT

KEY FEATURES

- Meets CDC & IPAC standards for reception/waiting rooms
- Holds standard size tissue and masks
- Includes bungee-cord box holders
- Includes touch-free hand sanitizer dispensers with drip tray
- Wood laminate construction weight 18 lbs
- HDPE construction is also available (weight 25.35 lbs)
- Compact and sleek designs measures 16" H x 14" W x 10" D

SANITIZING STATION WALL MOUNT PRICING

| Part number | Description | Retail |
|-------------|---|----------|
| SSWMHDPE | Sanitizing Station Wall Mount HDPE | \$695.00 |
| SSWMWL | Sanitizing Station Wall Mount Wood Laminate | \$620.00 |



Wood Laminate Wall Mount

ACCESSORIES



ACCESSORIES - DELIVERY SYSTEMS

DELIVERY SYSTEMS - CONTROLS

| ITEM NUMBER | DESCRIPTION | RETAIL PRICING |
|------------------|--|----------------|
| MCT500PM* | PANEL MOUNT, 3HP AUTO CONTROL UNIT | \$3,025.00 |
| | <ul style="list-style-type: none"> • Air/Water shut off, valves and regulator • Wet/dry foot control • Remote mount holder assembly • Quick-disconnect syringe • Individual water coolant adjustment • Sterling 4-hole Midwest-type HP tubing • Routing valve kit • Self contained (wall mount) clean water with gauge • 1.5 litre bottle includes shroud and mini regulator | |
| OPTIONS: | | |
| MC1HPFO | Fiber-optic system for 1 handpiece | \$850.00 |
| MC1HPFO-6 | 6 pin Fiber-optic system for 1 handpiece | \$1,126.00 |
| MC2HPFO | Fiber-optic system for 2 handpieces with tubing, and lamps | \$1,229.00 |
| MC2HPFO-6 | 6 pin Fiber-optic system for 2 handpieces with tubing and lamps | \$1,229.00 |
| MC1HPDR | Additional handpiece drive air only | \$277.00 |
| MC1HPWE | Additional handpiece, wet | \$576.00 |
| MCUTILH | Utility housing & cover only | \$180.00 |
| MCT520PM* | ORTHO PANEL MOUNT UNIT CONTROL, 2HP AUTOMATIC | \$3,042.00 |
| | <ul style="list-style-type: none"> • 3-way air/water syringe, quick disconnect • Wet/dry foot control • Sterling 4-hole Midwest-type HP tubing • Tradition Utility Center with 10' umbilical, valves, and regulator housing and cover • Routing valve kit • Self contained (wall mount) clean water with gauge • 1.5 litre bottle includes shroud and mini regulator | |
| OPTIONS: | | |
| MC1HPFO | Fiber-optic system for 1 handpiece | \$850.00 |
| MC1HPFO-6 | 6 pin Fiber-optic system for 1 handpiece | \$1,126.00 |
| MC2HPFO | Fiber-optic system for 2 handpieces with tubing, and lamps | \$1,229.00 |
| MC2HPFO-6 | 6 pin Fiber-optic system for 2 handpieces with tubing and lamps | \$1,229.00 |
| MCT600PK* | AUTOMATIC "MINI" 3HP UNIT CONTROL | \$3,256.00 |
| | <ul style="list-style-type: none"> • 3-way air/water syringe • Individual HP pressure adjustment • Individual water coolant adjustment • Sterling 4-hole Midwest-type HP tubing • Air/Water shut off, valves and regulator • Swivel, slide-mount, under cabinet mount • Routing valve kit • Self contained (wall mount) clean water with gauge • 1.5 litre bottle includes shroud and mini regulator | |
| OPTIONS: | | |
| MC1HPFO | Fiber-optic system for 1 handpiece | \$850.00 |
| MC1HPFO-6 | 6 pin Fiber-optic system for 1 handpiece | \$1,126.00 |
| MC2HPFO | Fiber-optic system for 2 handpieces with tubing, and lamps | \$1,229.00 |
| MC2HPFO-6 | 6 pin Fiber-optic system for 2 handpieces with tubing and lamps | \$1,229.00 |
| MCAS812 | Add folding arm assembly (8" & 12") with wall mount less swivel slide mount | \$73.00 |
| MCUTILH | Utility housing & cover only | \$180.00 |



DELIVERY SYSTEMS - CABINET MOUNTED VACUUM PACKAGES

MC055*

\$2,003.00

- Central Vacuum under-surface package with rotating mount
- 3-way air and water QD syringe
- Solids collector and canister
- 2 HVE and 1 SE with 5' tubing
- Vacuum utility with air and water shut-off valves

MCFPVK2*

\$467.00

- Central Vacuum trap with solids collector
- 2 universal HVE valves with 5' tubing, SE valve with 5' tubing holder bar with 3 universal holders

MCFPVK2Q*

\$518.00

- Available with quad holder bar
- Standard features are same as MCFPVK2

MCHSVK2*

\$466.00

- Central Vacuum trap with solids collector
- 2 universal HVE valves with 5' tubing, SE valve with 5' tubing
- 3 position horizontal swing holder bar

MCHSVK2Q*

\$517.00

- Available with quad holder bar
- Standard features are same as MCHSVK2

MCVK1*

\$225.00

- 1 universal HVE and 1 SE (both include 5" tubing)
- 1 vacuum trap with solids collector

MCVK1PK*

\$349.00

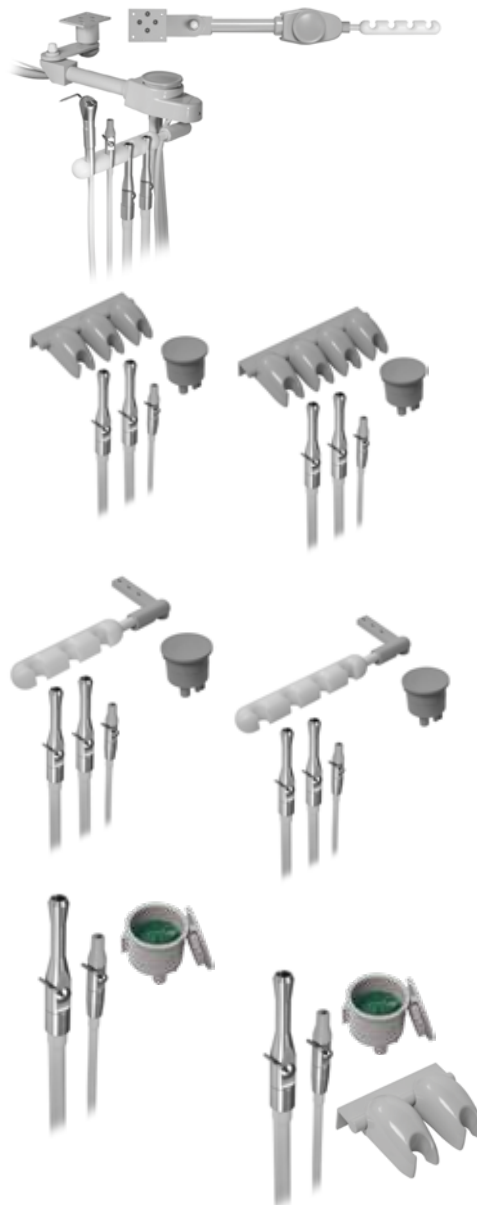
- Standard features are same as MCVK1
- Also includes 2 holders/hangers and dual bar



OPTIONS*

- 3-way QD syringe with tubing and flow adjustment block
- MCSYRB

\$267.00



| Optional Accessories | Part Number | Retail |
|--|-------------|----------|
| Additional Universal Autoclavable HVE position with tubing | MCIHVE | \$104.00 |
| Autoclavable SE valve with 5' of tubing | MCSE1 | \$73.00 |
| 3-way QD syringe with tubing and flow adjustment block | MCSYRB | \$267.00 |
| Vacuum Utilities (No housing or cover) | MCUTILV | \$411.00 |
| Self contained clean water | MCSCWM1 | \$319.00 |
| Utility housing and cover only | MCUTILH | \$180.00 |

ACCESSORIES - PLUMBING

TAPMASTER HANDS-FREE CONTROL***STANDARD FEATURES**

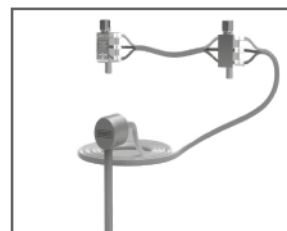
- Tapmaster hand-free Single (MP1750) and Dual (MP1752 not shown) kick pedal controls
- Dual Kick used on Center Island cabinets
- Mounts on cabinet toe kick; 4" height minimum
- Horizontal clearance of 8" minimum

**MP1750 PRICING / OPTIONS**

| Cabinet | Width | Depth | Height | Retail |
|---------|-------|-------|--------|------------|
| MP1750 | 8" | 1.14" | 3.42" | \$643.00 |
| MP1752 | 8" | 1.14" | 3.42" | \$1,064.00 |

TAPMASTER HANDS-FREE HWC CONTROL* (EURO STYLE)**STANDARD FEATURES**

- Mounts on cabinet toe kick; 4" height minimum
- Horizontal clearance of 8" minimum
- Hands-free temperature control: Hot, Warm, Cold

**MP1775 PRICING / OPTIONS**

| Part Number | Retail |
|-------------|----------|
| MP1775 | \$643.00 |



*** CALIFORNIA PROP 65 WARNING:** This product can expose you to chemicals including lead which is known to the State of California to cause cancer and birth defects or other reproductive harm. For more information go to www.P65Warnings.ca.gov.
Note: Product deemed drinking water safe under NSF 61.372

ACCESSORIES - PLUMBING FIXTURES

FAUCETS

| Product Description | Part Number | Retail | Select |
|--|-------------|----------|--------------------------|
| Single Lever Faucet, Chrome | MP2M | \$388.00 | <input type="checkbox"/> |
| Single Lever Faucet with Swivel Spout | MP2D | \$445.00 | <input type="checkbox"/> |
| Single Lever Faucet with Telescoping Spray Gun | MP2PS | \$494.00 | <input type="checkbox"/> |
| Single Lever Faucet with gooseneck spout | MP5 | \$410.00 | <input type="checkbox"/> |

SINKS

| Product Description | Part Number | Retail | Select |
|---|-------------|------------|--------------------------|
| Stainless Steel Sink 11" x 12.5" | MP1 | \$371.00 | <input type="checkbox"/> |
| Stainless Steel Sink and a half 18" x 26" x 25" | MP15 | \$598.00 | <input type="checkbox"/> |
| Stainless Steel Sink, Double | MP1DBL | \$843.00 | <input type="checkbox"/> |
| Stainless Steel Lab Sink 18" x 20" | MP1EXL | \$303.00 | <input type="checkbox"/> |
| Solid Surface Lab Sink, Undermounted 15" x 15" | MP1LCN | \$2,053.00 | <input type="checkbox"/> |
| Stainless Steel Sink, Round | MP1R | \$324.00 | <input type="checkbox"/> |

SOAP DISPENSERS

| Product Description | Part Number | Retail | Select |
|------------------------|-------------|----------|--------------------------|
| Soap Dispenser, Chrome | MP3M | \$138.00 | <input type="checkbox"/> |

ACCESSORIES - WASTE

MB11M**STANDARD FEATURES**

- Countertop waste drop and metal bezel
- Metal bezel only (MB11BM)

MB11M PRICING / OPTIONS

| Part Number | Retail |
|-------------|----------|
| MB11M | \$169.00 |

**SHARPS SYSTEMS****STANDARD FEATURES**

- Under-counter sharps hanger (bags not included)
- 6.2qt MPSCHM62 or 10qt MPSCHM10 container
- Top-mounted sharps container (MB11S)

SHARPS SYSTEMS PRICING / OPTIONS

| Part Number | Retail |
|-------------|----------|
| MPSCHM62 | \$450.00 |
| MPSCHM10 | \$542.00 |
| MB11S | \$206.00 |

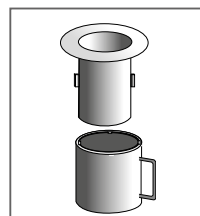
**WASTE SOLUTIONS****STANDARD FEATURES**

- 4" waste chute with bag holder collar (MPWC4)
- Waste drop receptacle, bin and p-trap extension

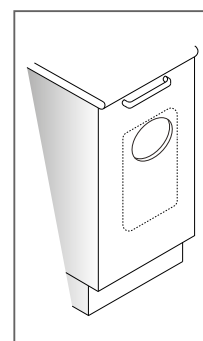
(MPTN); bags not included for either item

WASTE SOLUTIONS PRICING / OPTIONS

| Part Number | Retail |
|-------------|----------|
| MPWC4 | \$380.00 |
| MPTN | \$256.00 |



MPWC4 Waste Chute



MPTN Waste Solution

TERMS AND CONDITIONS



TAILORED SOLUTIONS FOR YOUR DENTAL PRACTICE

TERMS

All prices, unless otherwise listed are FOB Maple, Ontario, Canada. Payment terms are specified on each invoice and are due in MCC's office by this date. Discount does not apply to freight, installation/delivery and/or special color charges. A service charge of 2% per month (annual 24%) will be charged on past due accounts. All prices are subject to change without notice.

WARRANTY

Tailored and Custom Cabinets: MCC warrants its products to be free from defects in material and workmanship only. No other warranties are expressed or implied. Excluding water damage, this warranty shall extend ten (10) years on the HDPE Aseptx Collection and seven (7) years on all wood cabinets unless otherwise stated. Retraction Systems are warranted for two (2) years. Delivery Systems are warranted for five (5) years. Written notice of breach must be given to MCC within this period. Buyer's remedy of this warranty is limited to repair parts or replacement of items by MCC. This warranty is void if items are carelessly used or improperly maintained or improperly installed. No claim for labor or consequent damages will be allowed. OEM warranties supersedes MCC's warranty. MCC Controls are warranted to be free from defects in materials and workmanship for a period of three years, unless otherwise stated. Buyer's remedy for breach of warranty is limited to repair parts or replacement parts furnished by the manufacturer. This warranty is void on items that are carelessly used, improperly installed, or improperly maintained. This warranty does not cover damage caused by infection-control chemicals or cleaning materials/solutions.

WATER DAMAGE

Proper care and maintenance must be adhered to in order to prevent water damage. This means thoroughly wiping excess water, solvents and liquids from countertops. MCC is not responsible for any water damage.

RETURNED GOODS

An MCC factory Return Authorization Number (RAN) must be obtained from MCC for the return of any warranty or special sales situation. A Return Authorization form must be completed and faxed to our customer service department. If authorization is granted, transportation charges must be pre-paid on ALL return items and received in good condition. The RAN must be clearly marked on the packing slip. Custom design cabinets or Mobiles, including special colors, are NON-RETURNABLE under any circumstance. An RAN does not guarantee credit. Credit will not be issued until after receipt and inspection of the returned items has been assessed. All returned items are subject to a 20% restocking fee and credit will be based on the original invoice price. MCC's Receiving Dock will not accept any returned freight that does not have a legitimate RAN. Please contact MCC for proper procedure information.

SHIPPING AND TRANSPORTATION

Arrangements for preferred carriers should be made in advance, in the absence of shipping instructions MCC reserves the right to determine the best mode of transportation based on the cabinet/equipment order.

FREIGHT DAMAGE

Merchandise arriving with visible external damage should be thoroughly inspected and clearly described on the bill of lading, by the customer, and the carrier should be notified IMMEDIATELY. If concealed freight damage is revealed upon unpacking of cabinets, the carrier and MCC should be notified IMMEDIATELY. Digital photographs of all damages should be emailed within 10 days of receipt of the shipment. The carrier is responsible for damage or loss in transit. If damage is not noted on the bill of lading, the buyer must accept full responsibility for any damage discovered at a later date.